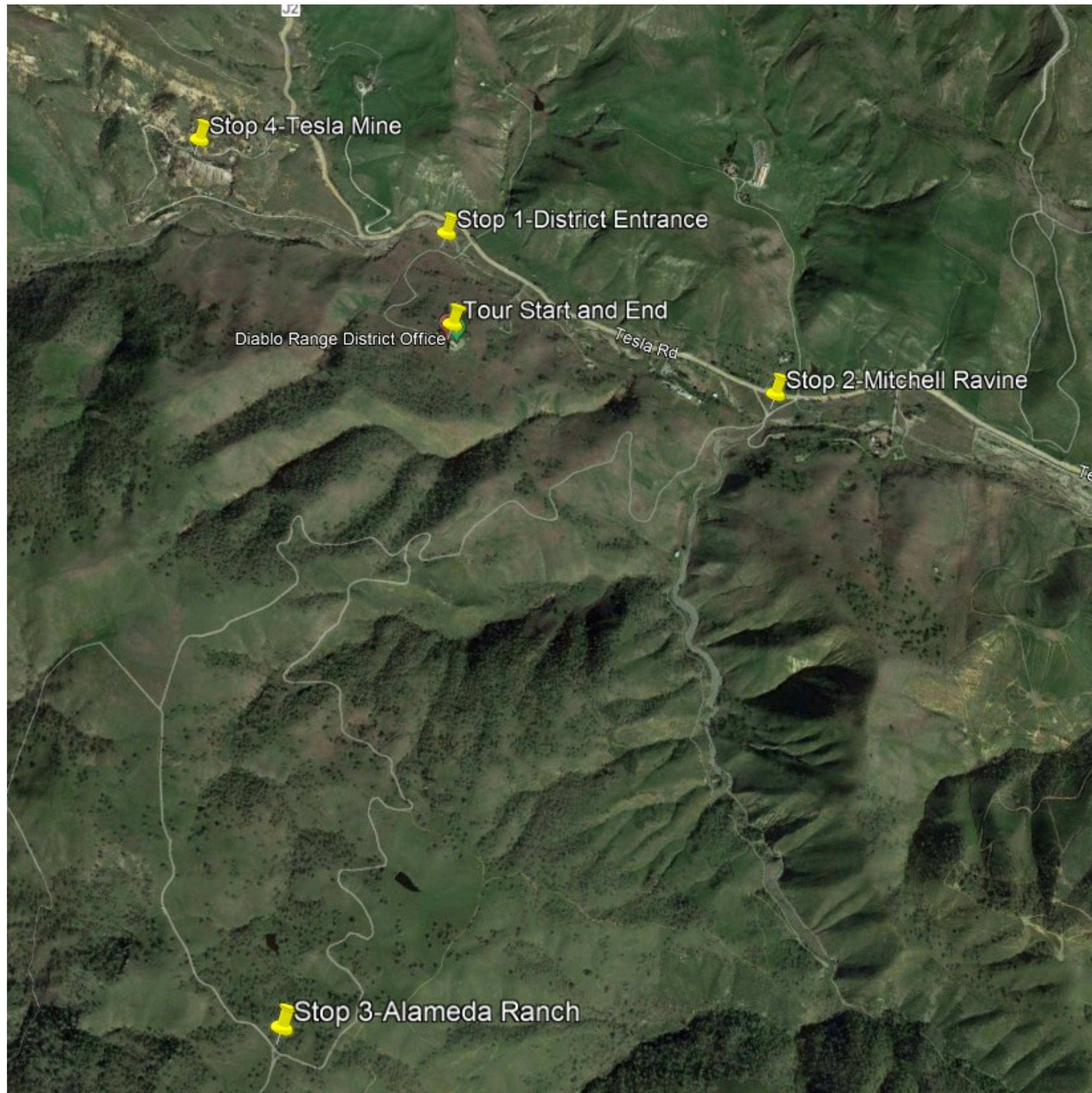




Alameda Tesla Property Tour Map



Tour Start-District Office 9:00 (13 min)

Topics: Welcome and Overview

Speakers: Alex, Clint, April

Stop 1-District Entrance 9:22 (15 min)

Topics: Administrative Property, Natural Resources, Cattle Grazing, Youth Corps

Speakers: Clint, Gina, Russ Piazza-Neighbor, Steven Addison-CiviCorps

Stop 2-Mitchell Ravine 9:48 (20 min)

Topics: Surroundings, Neighbors, Public Safety/LE, History, Interpretation

Speakers: Megan, Ryen, Joe, Fiona

Stop 3-Alameda Ranch 10:41 (29 min)

Topics: Viewshed, Wildfire, Special Status Species, Cultural, Tribal

Speakers: April, Wes, Ed-CalFire, Nicole, Jake-CDFW, Amanda, Zack, Tribal Leader

Stop 4-Tesla Mine 11:38 (17 min)

Topics: History, Mining, Storm Water Management, Next Steps

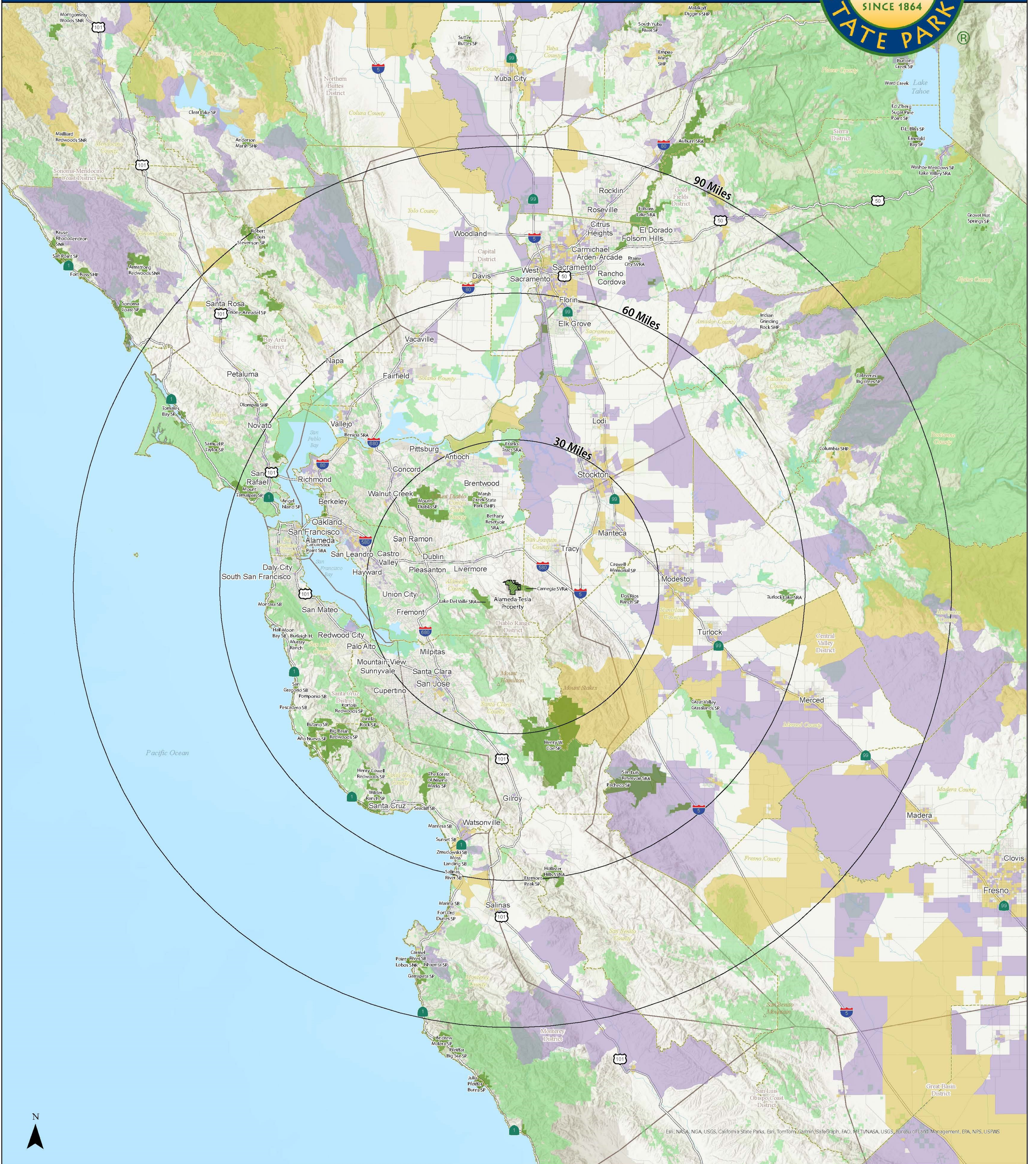
Speakers: Joe, Dan Moiser-Author, Elizabeth, Alex

Tour End-District Office 12:09

All times are estimates



Alameda-Tesla Property Disadvantaged Communities Map



Legend

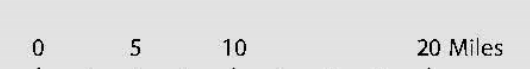
SEVERELY DISADVANTAGED COMMUNITY (LESS THAN \$50,457)	CALIFORNIA PROTECTED AREAS DATABASE (CPAD)
DISADVANTAGED COMMUNITY (\$50,458-\$82,287)	ALAMEDA-TESLA PROPERTY
	DISTRICT BOUNDARY
	UNIT BOUNDARY
	COUNTY BOUNDARY

*American Community Survey 2017-2021 (ACSDT5Y2021.B19013)
Mean Household Income (MHHI): \$71,228

Summary

Population of Disadvantaged Block Group within 30 Miles*: 353,726 (Disadvantaged: 223,980)(Severely Disadvantaged: 129,746)
 Population of Disadvantaged Block Group within 60 Miles*: 1,168,010 (Disadvantaged: 693,016)(Severely Disadvantaged: 474,994)
 Population of Disadvantaged Block Group within 90 Miles*: 950,446 (Disadvantaged: 535,916)(Severely Disadvantaged: 414,530)

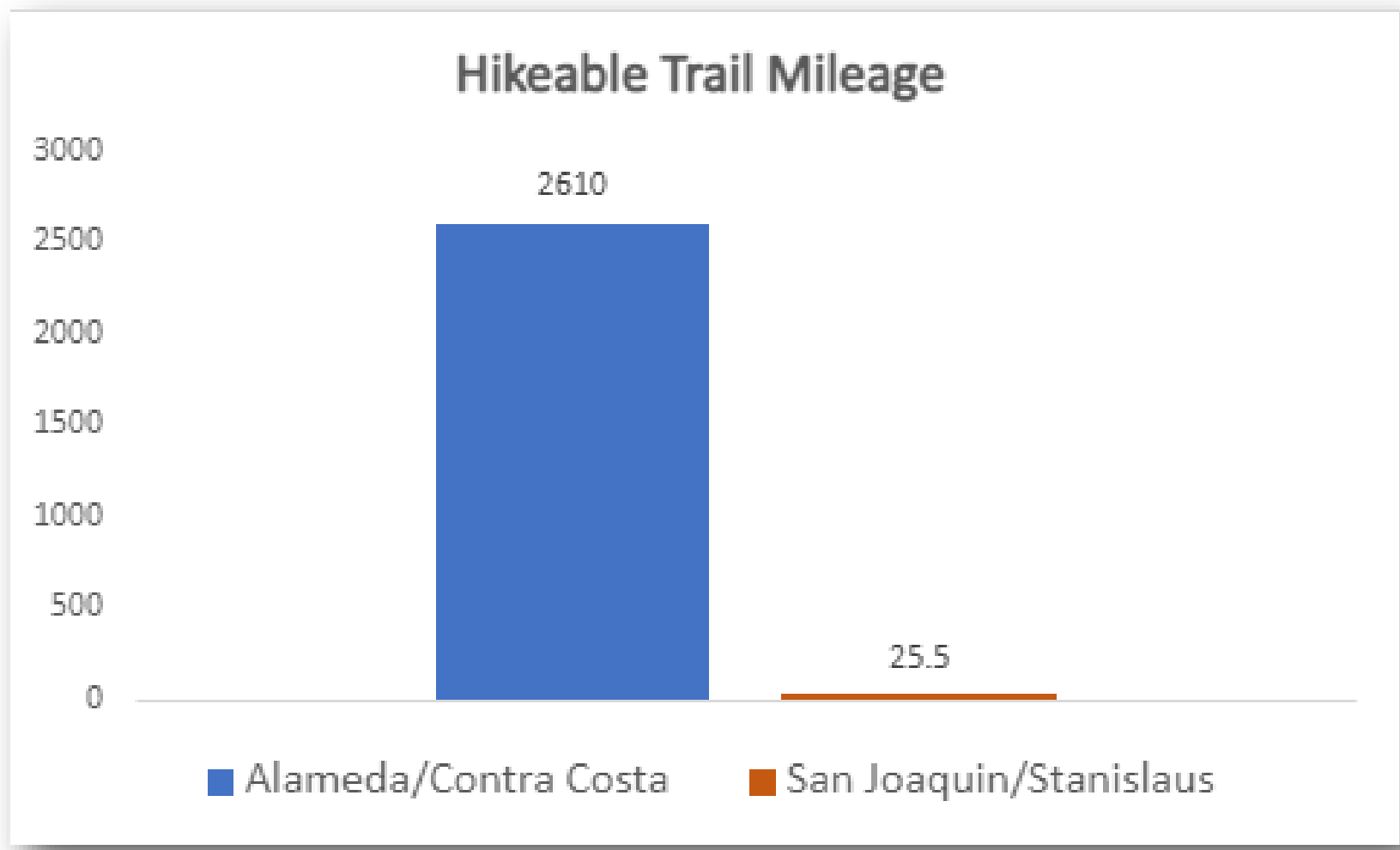
*American Community Survey 2017-2021 (ACSDT5Y2021.B01003)
 Centroid of Census Block Group used to calculate distance from property



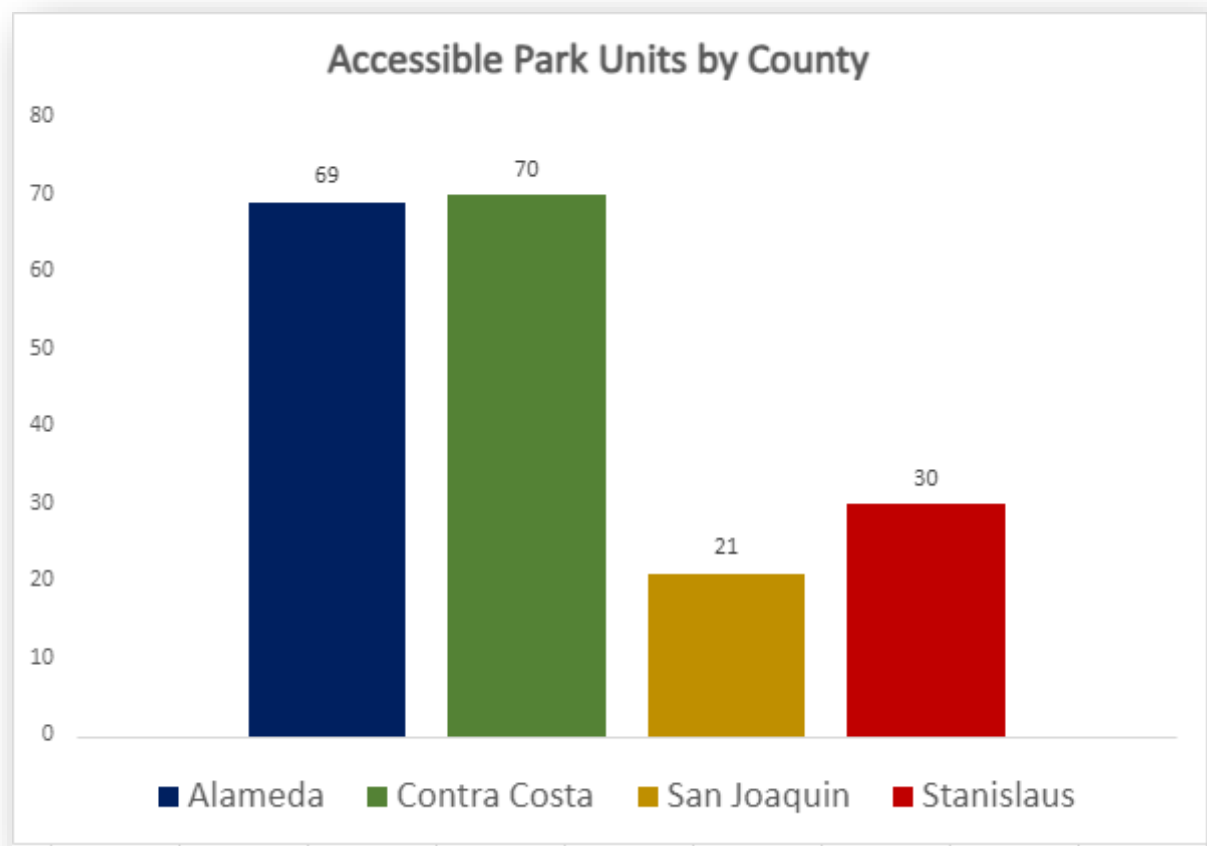
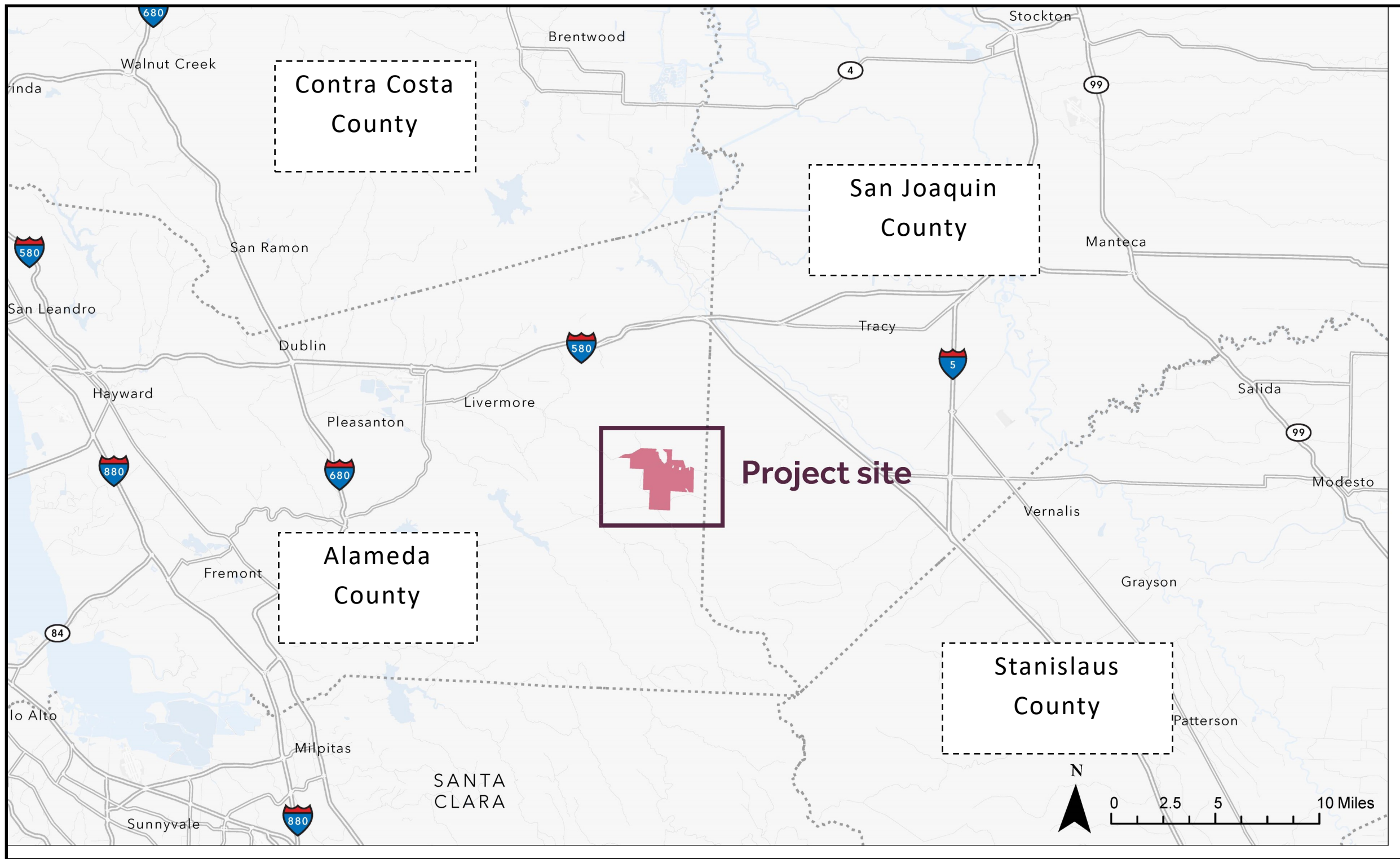
4/9/2024 1:14 PM
 Spatial Reference
 Name: NAD 1983 California Teale Albers



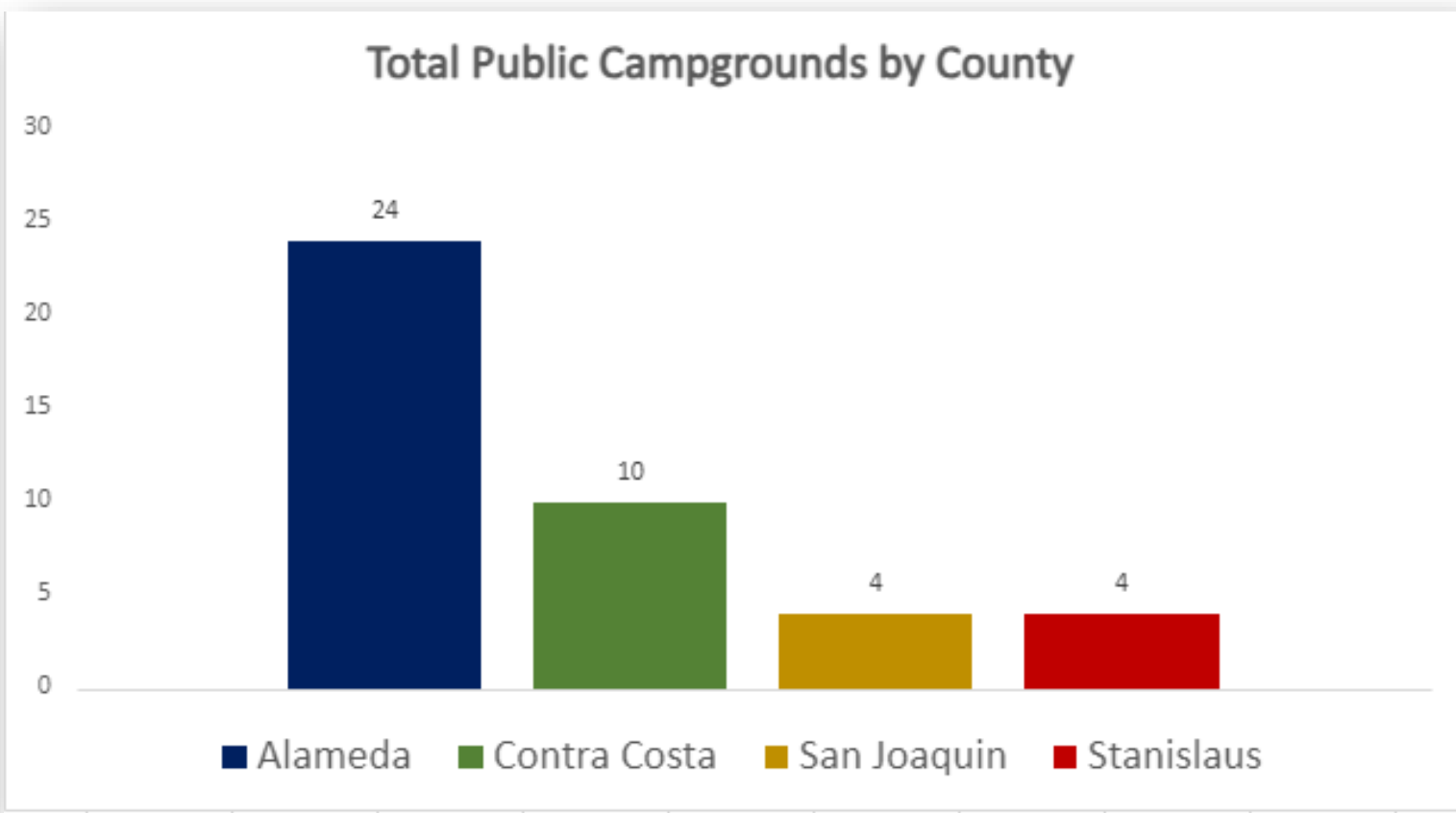
Access to Parks Nearby Communities



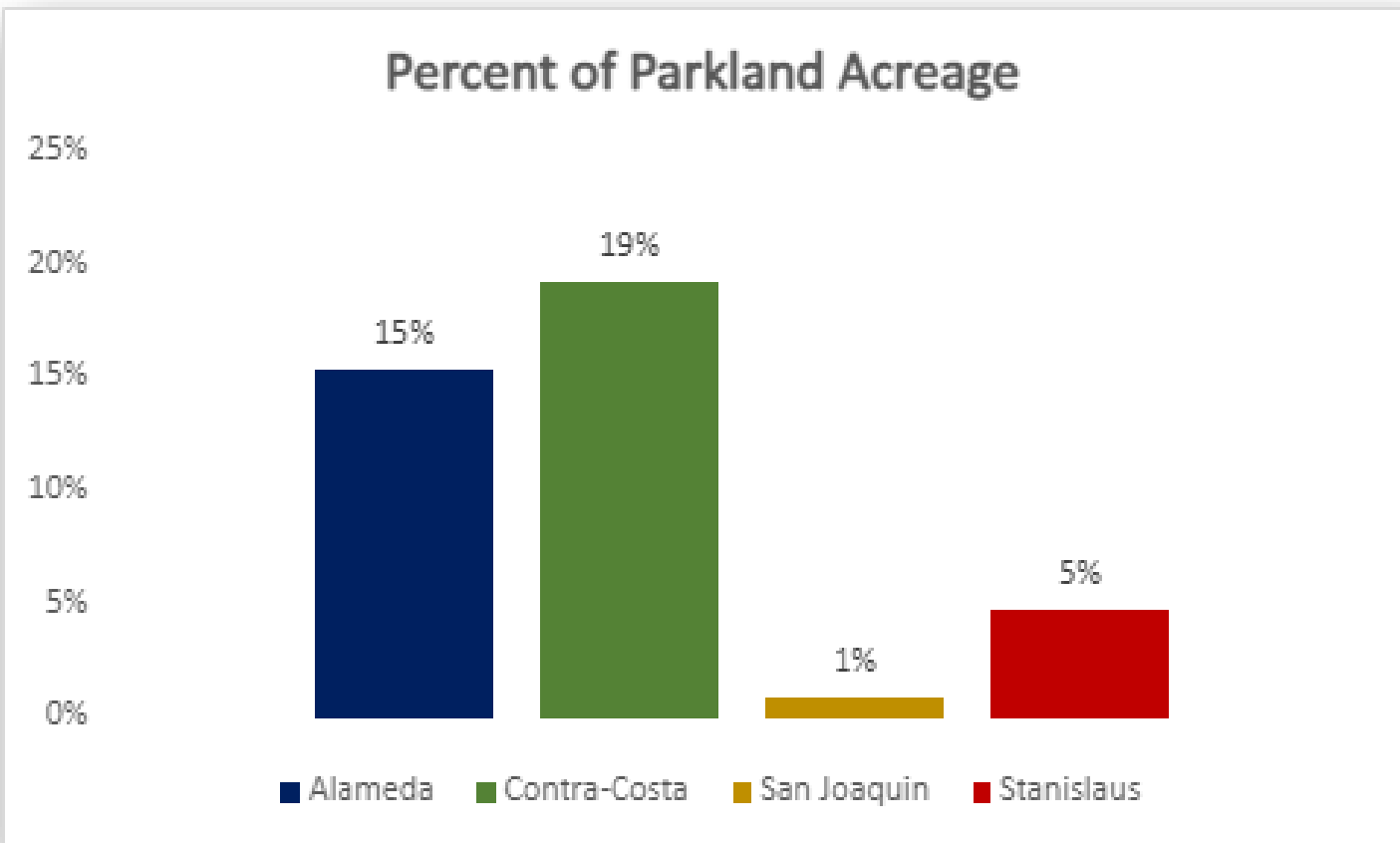
At the county, regional, state, and national levels, Alameda County and Contra Costa Counties combined have approximately 102 times more open public hiking trails than San Joaquin and Stanislaus Counties.



At the County, Regional, State, and National Level, Alameda and Contra Costa Counties offer more publicly accessible park units than San Joaquin and Stanislaus Counties.

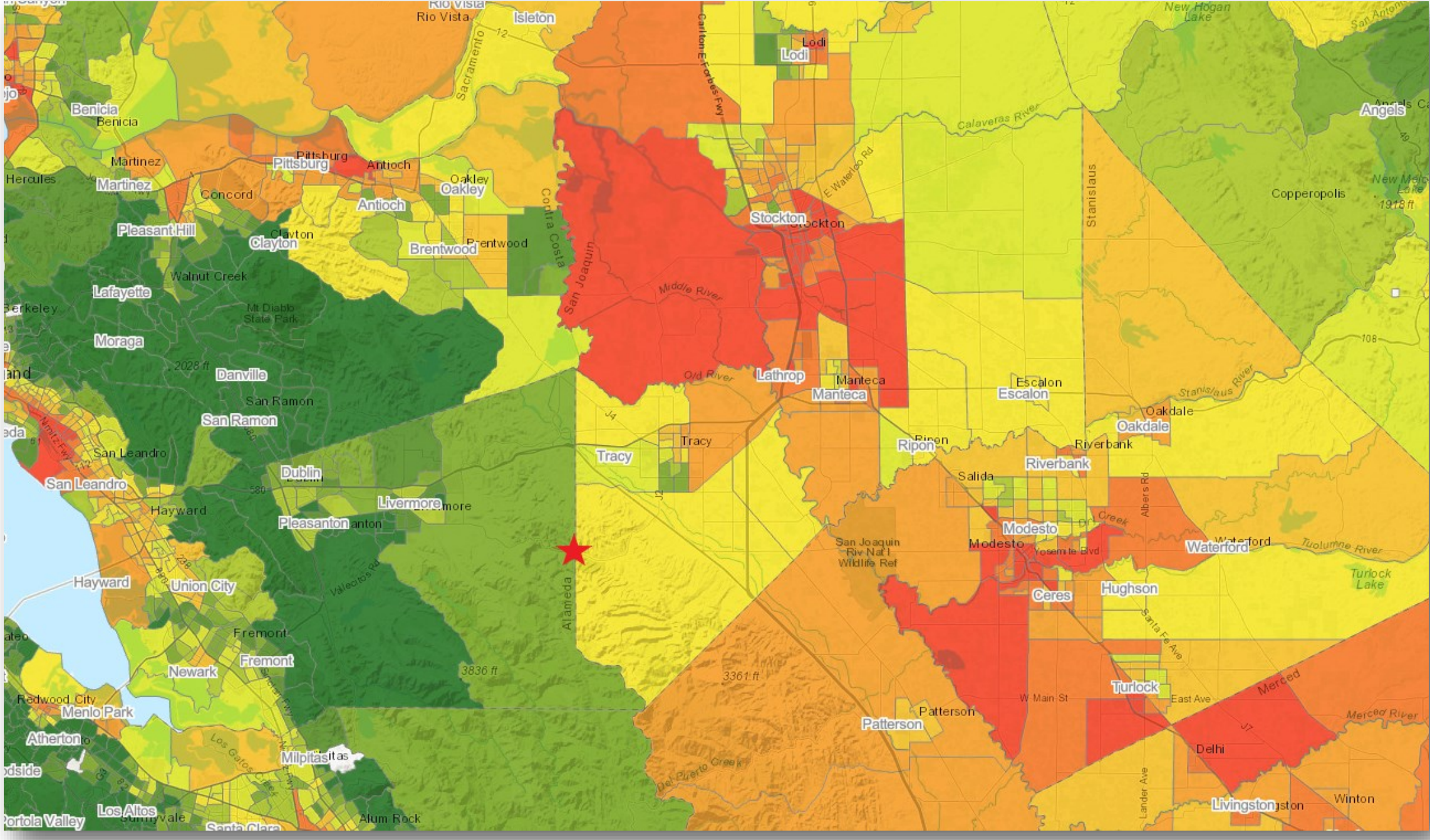
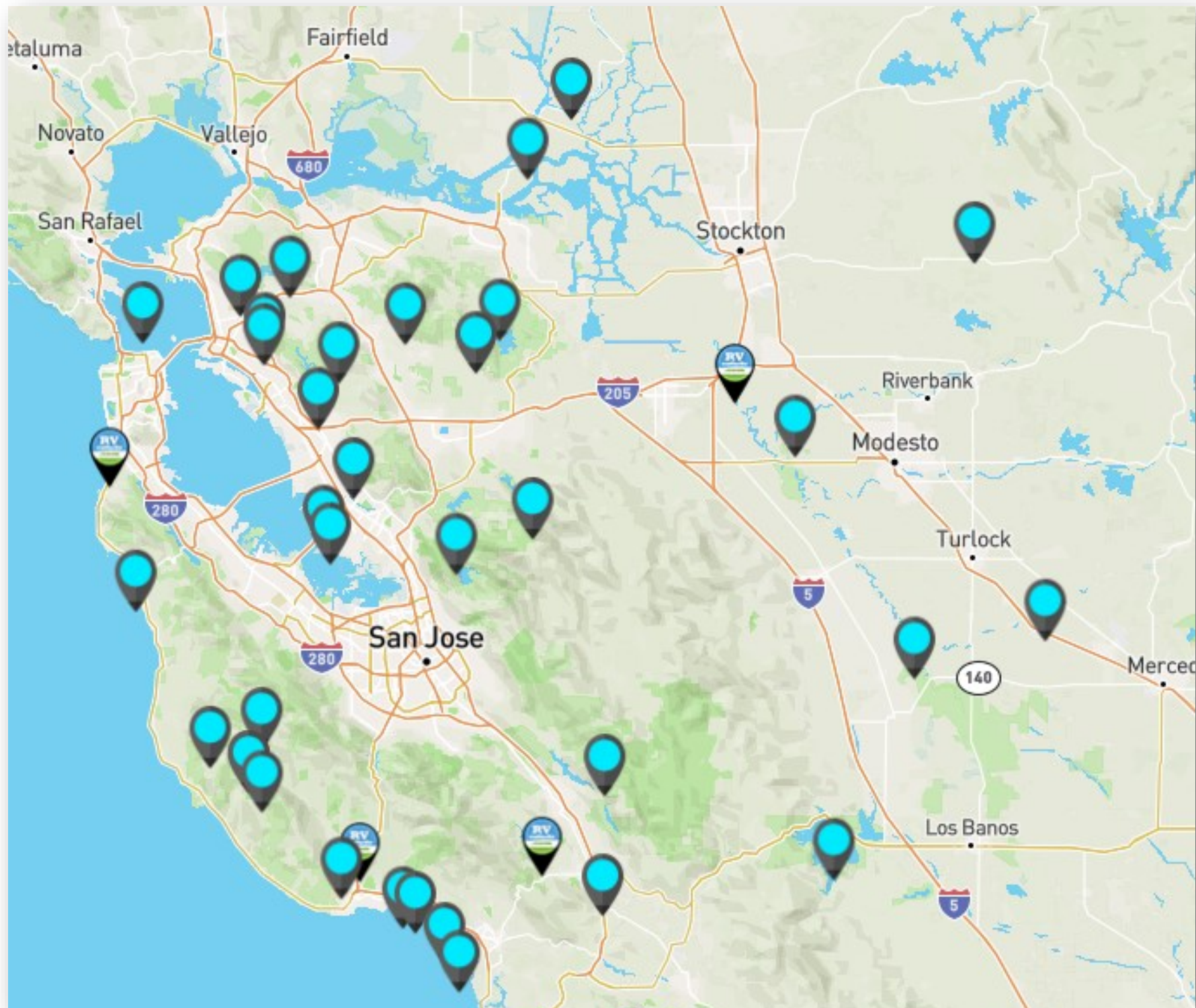


Of the four adjacent counties and at the Park County, Regional, State, and National Level, Alameda County has the most public campgrounds, followed by Contra Costa County, then San Joaquin and Stanislaus Counties.



Per the Office of Grants and Local Service's Community FactFinder data, San Joaquin County has the lowest percentage of park land of the four counties, at 1%.

Reserve America's Campground Map of the Area



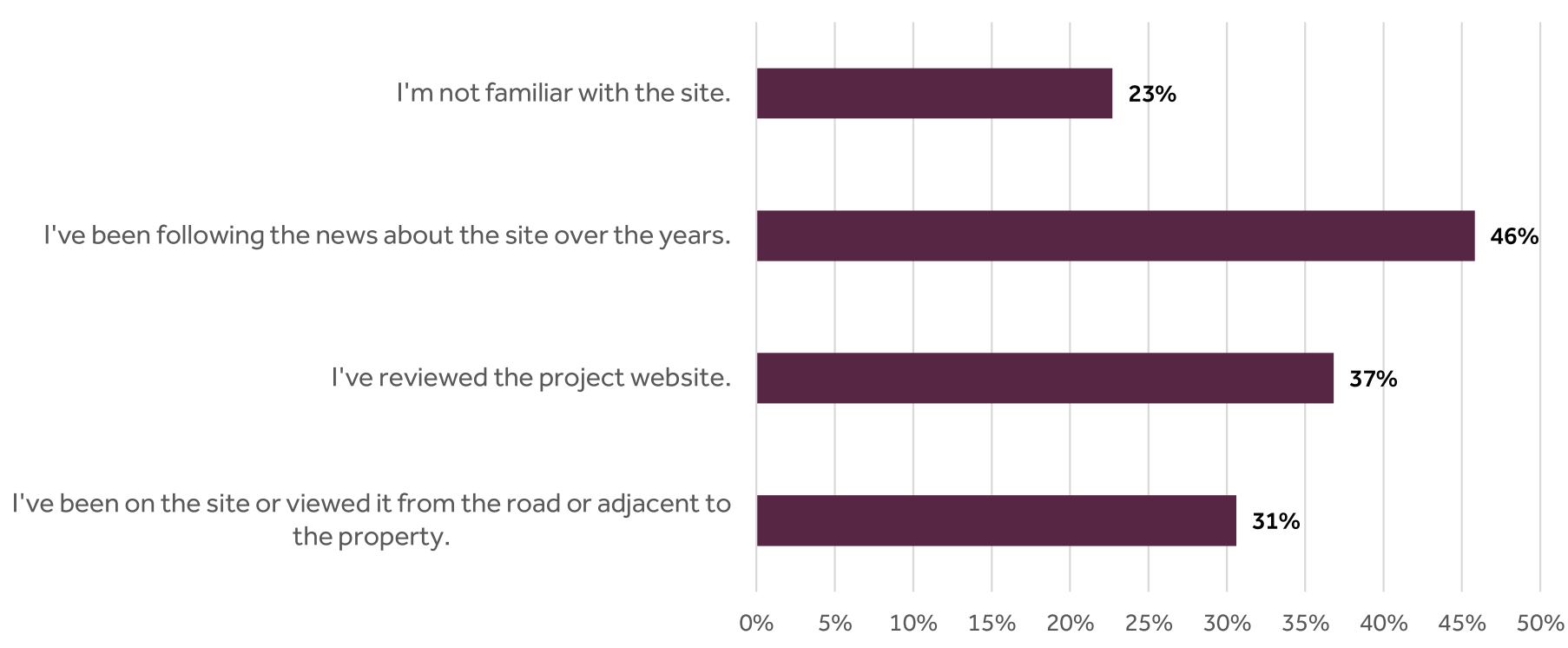
CalEnviroScreen Map of Surrounding Communities



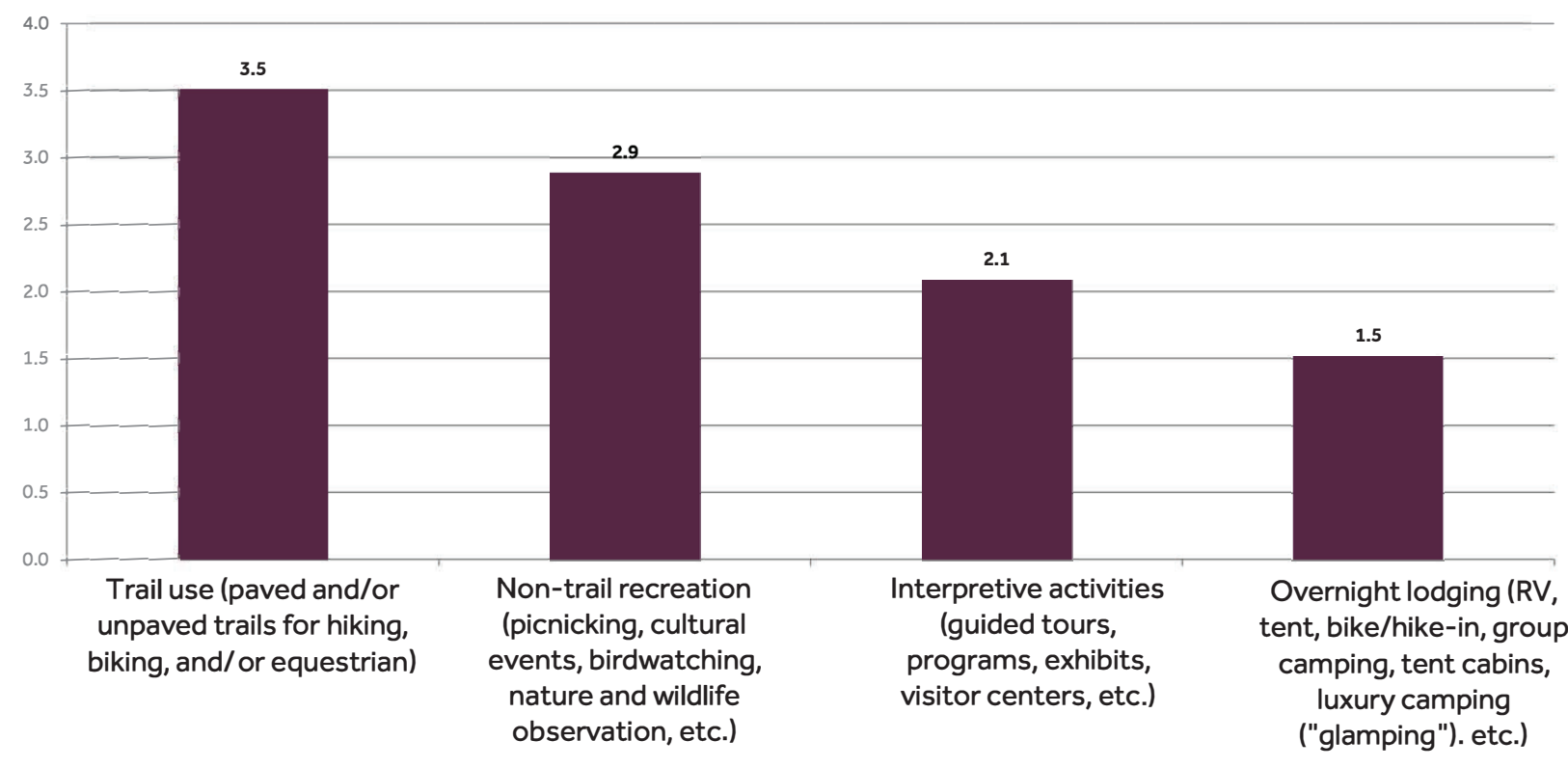
Data was compiled from the Community FactFinder, park operator websites, and reservation systems, including East Bay Regional Park District, Alameda County, Contra Costa County, San Joaquin County, Stanislaus County, National Park Service, US Fish & Wildlife Service, Reserve California, and Reserve America. The included maps are: Cal EnviroScreen, showing healthy environment factors ranging from most healthy (dark green) to least healthy (dark red), and Reserve America's area campground search centered on the Alameda Tesla property.

Visioning Survey Results

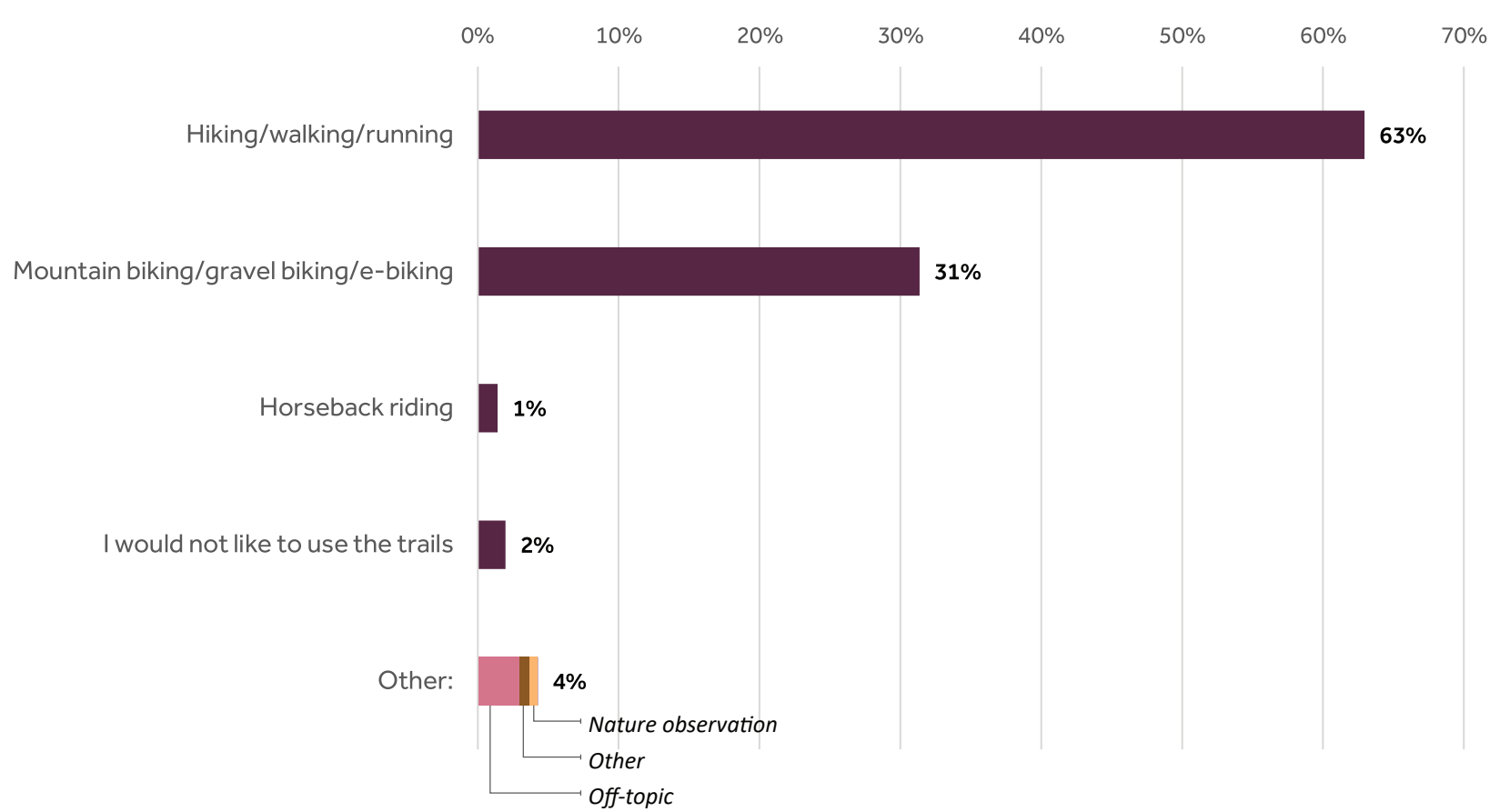
1. How familiar are you with the Alameda-Tesla property?



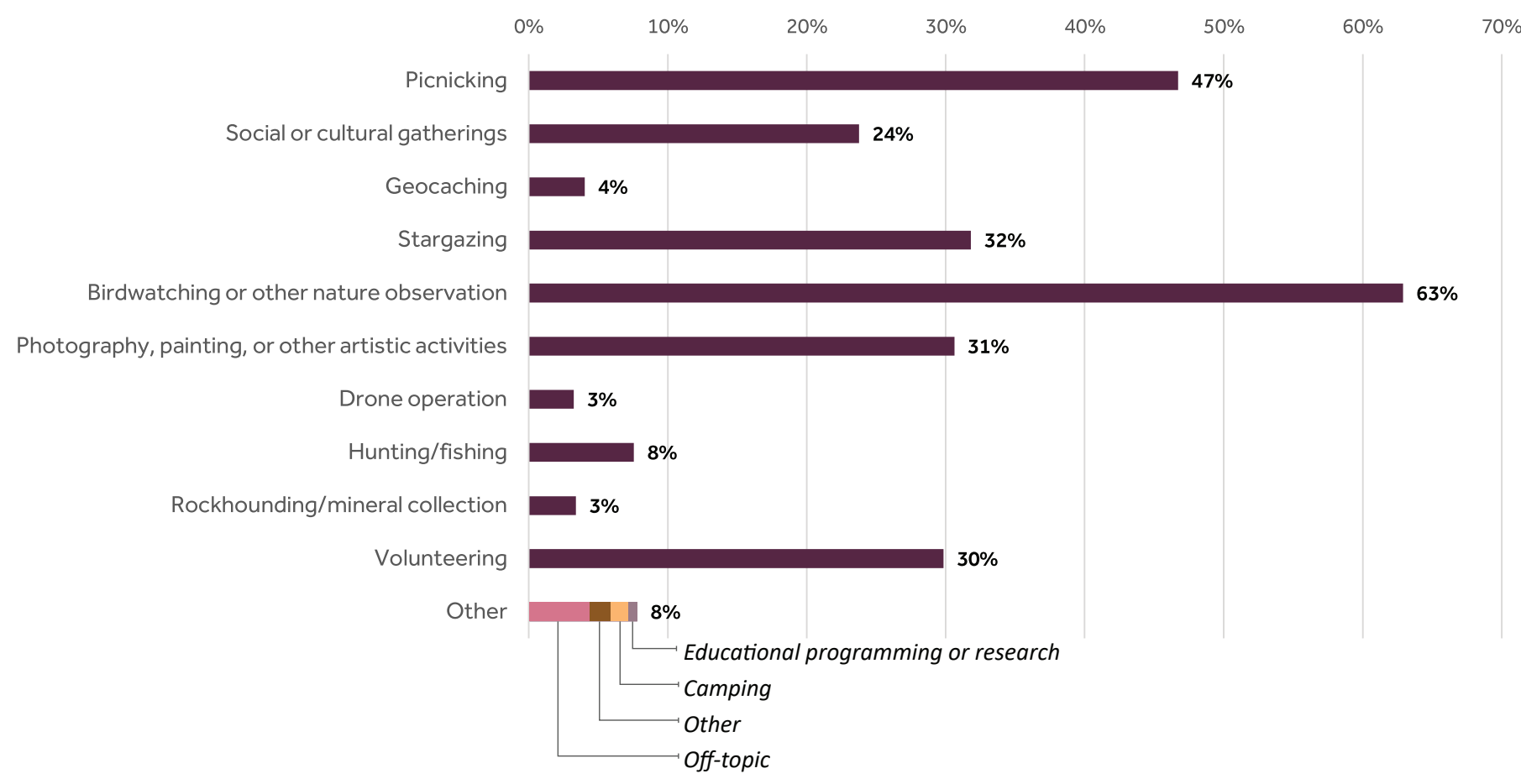
2. What types of activities would you like to participate in at the property?



3. If there were trails at the property in the future, how would you prefer to use them?

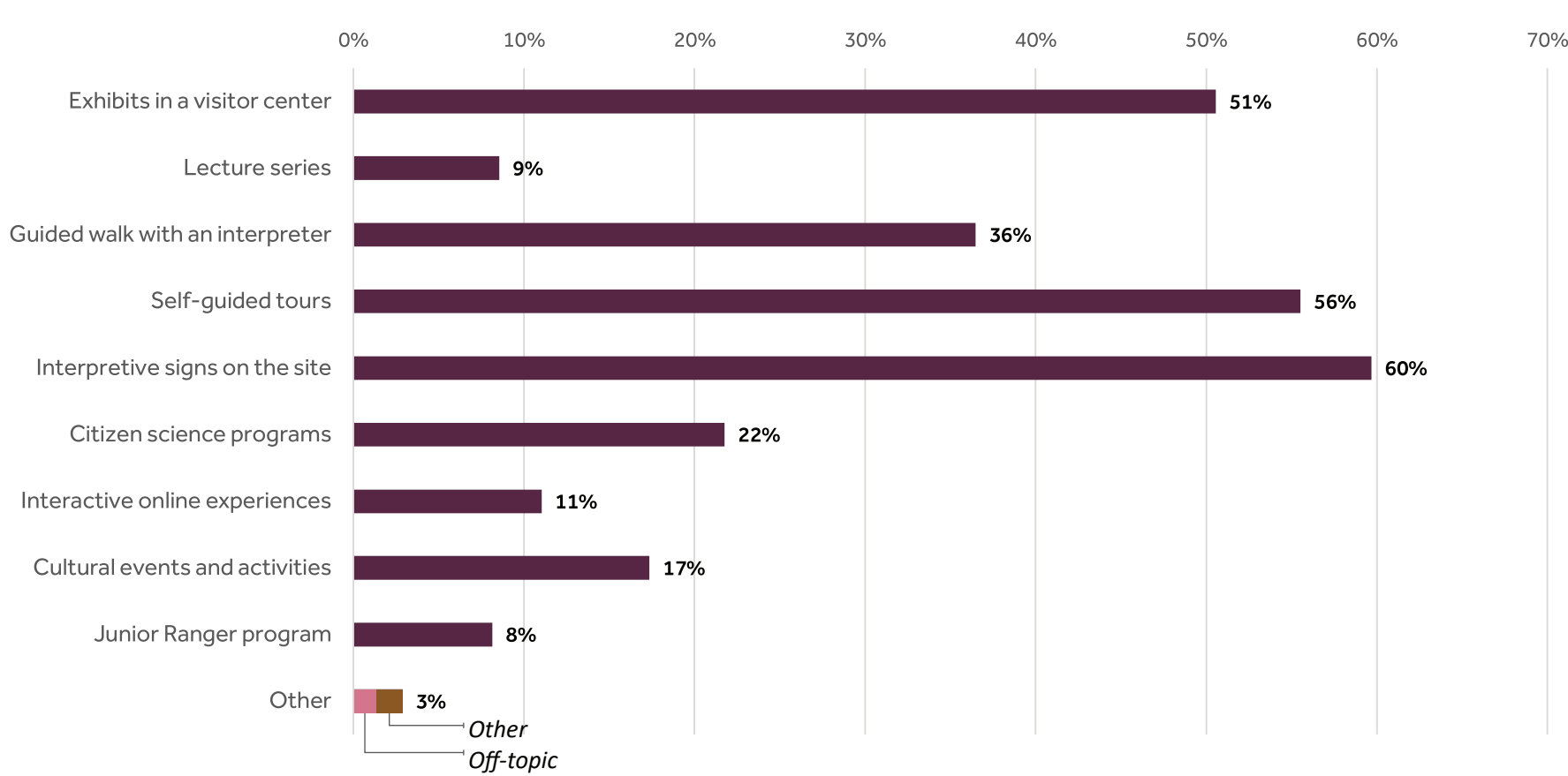


4. What non-trail recreation activities would you like to participate in at the property?

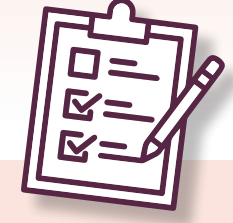


*Percentages indicate the percentage of people that included the given option in their selection of three.

5. How would you like to learn about the natural and cultural history of the property?

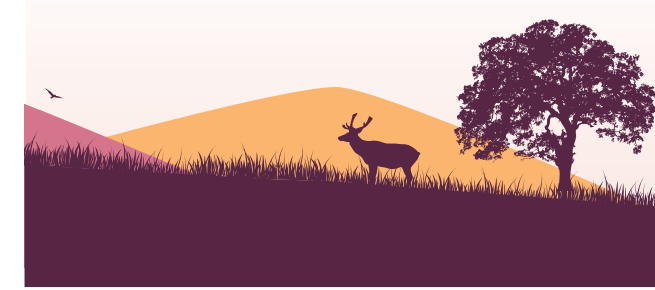
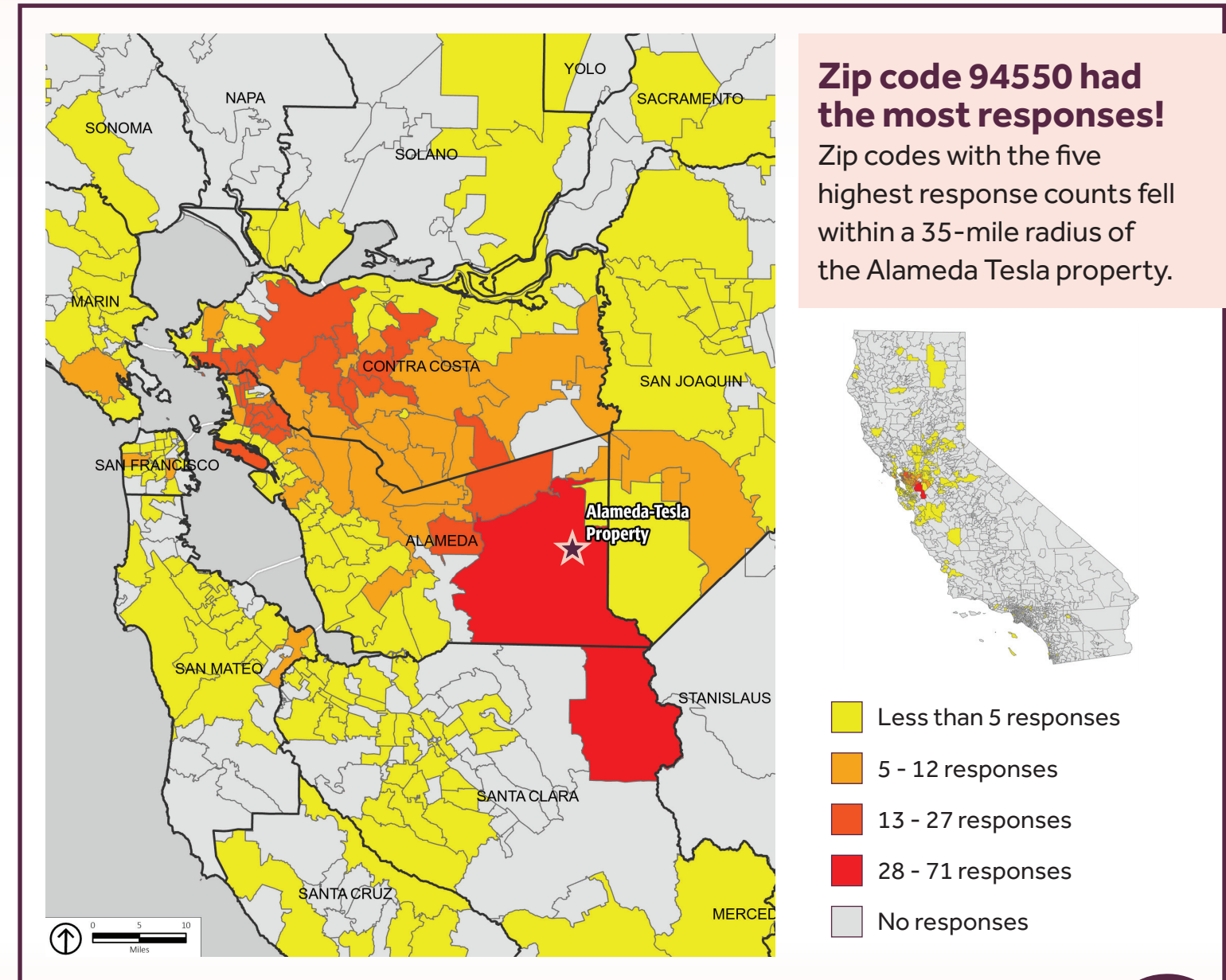


Alameda-Tesla Classification and General Plan Project Visioning Survey Results Summary



Here's what we heard from you!

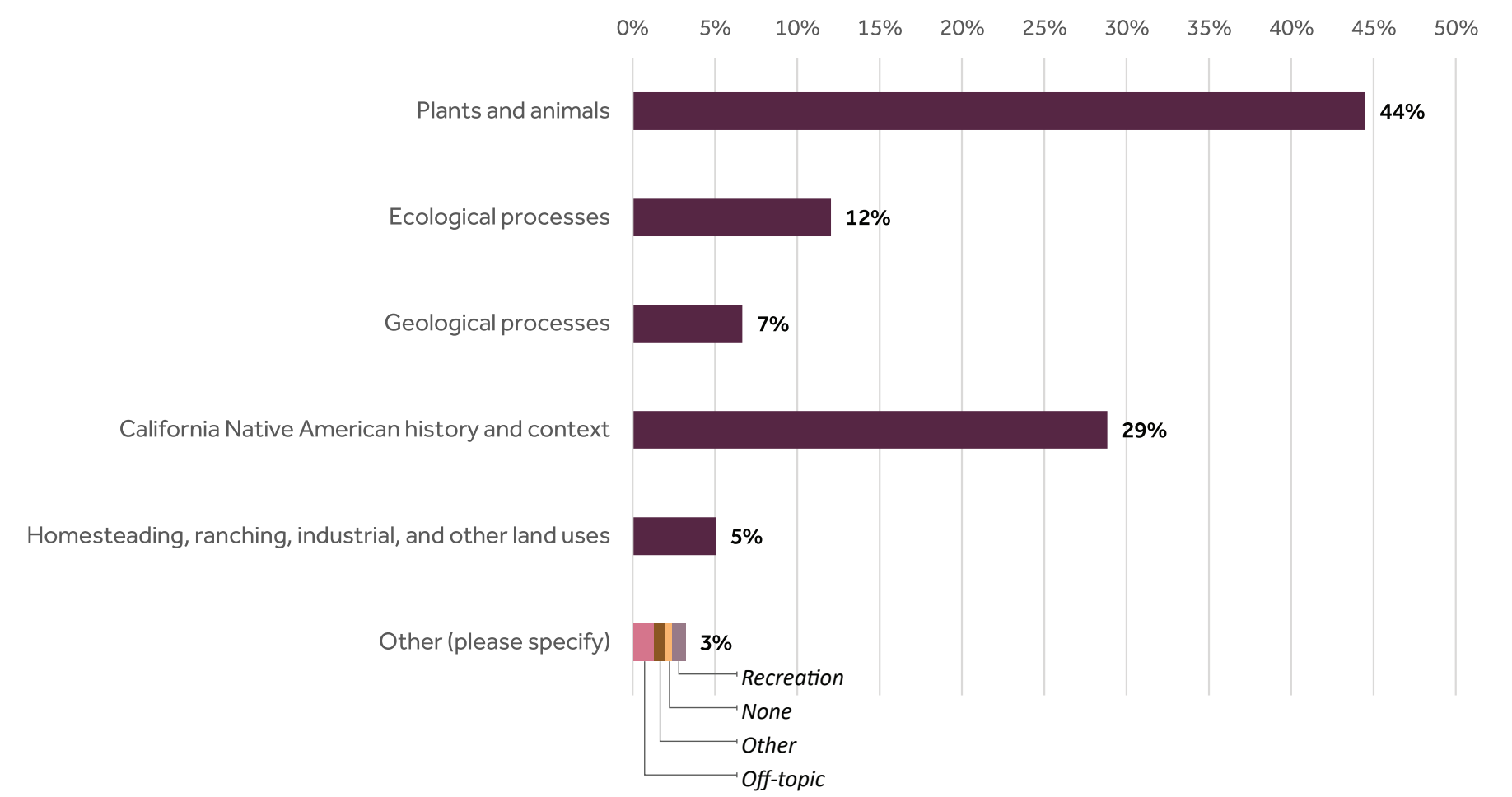
The Visioning Survey was available from October through December 2023. It collected information about what people envision for the types and intensity of future activities and experiences at the California State Parks Alameda-Tesla property.



1,257 responses were collected!
Survey respondents weighed in on topics like recreational activities, educational interests, and a vision for the property.

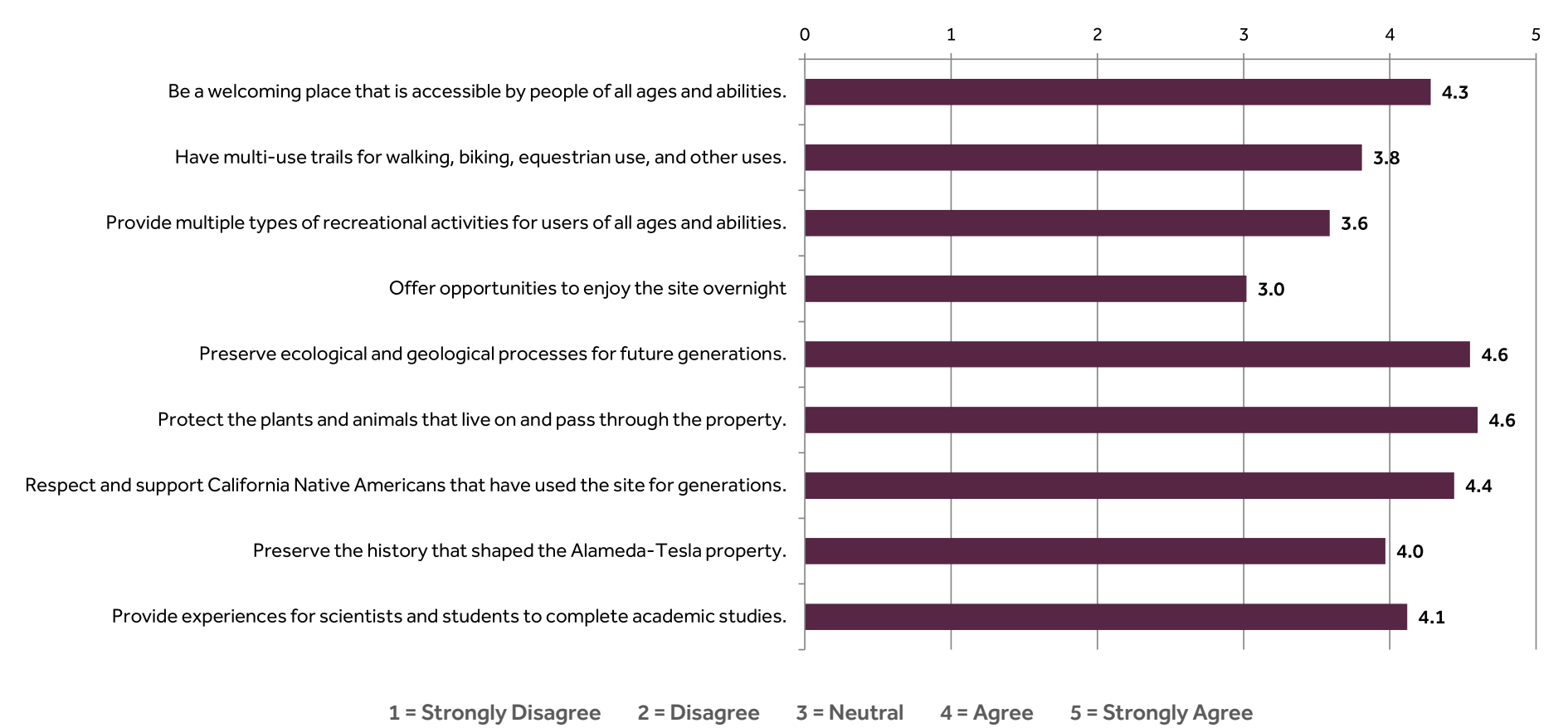


6. What are you most interested in learning about at the Alameda-Tesla property?

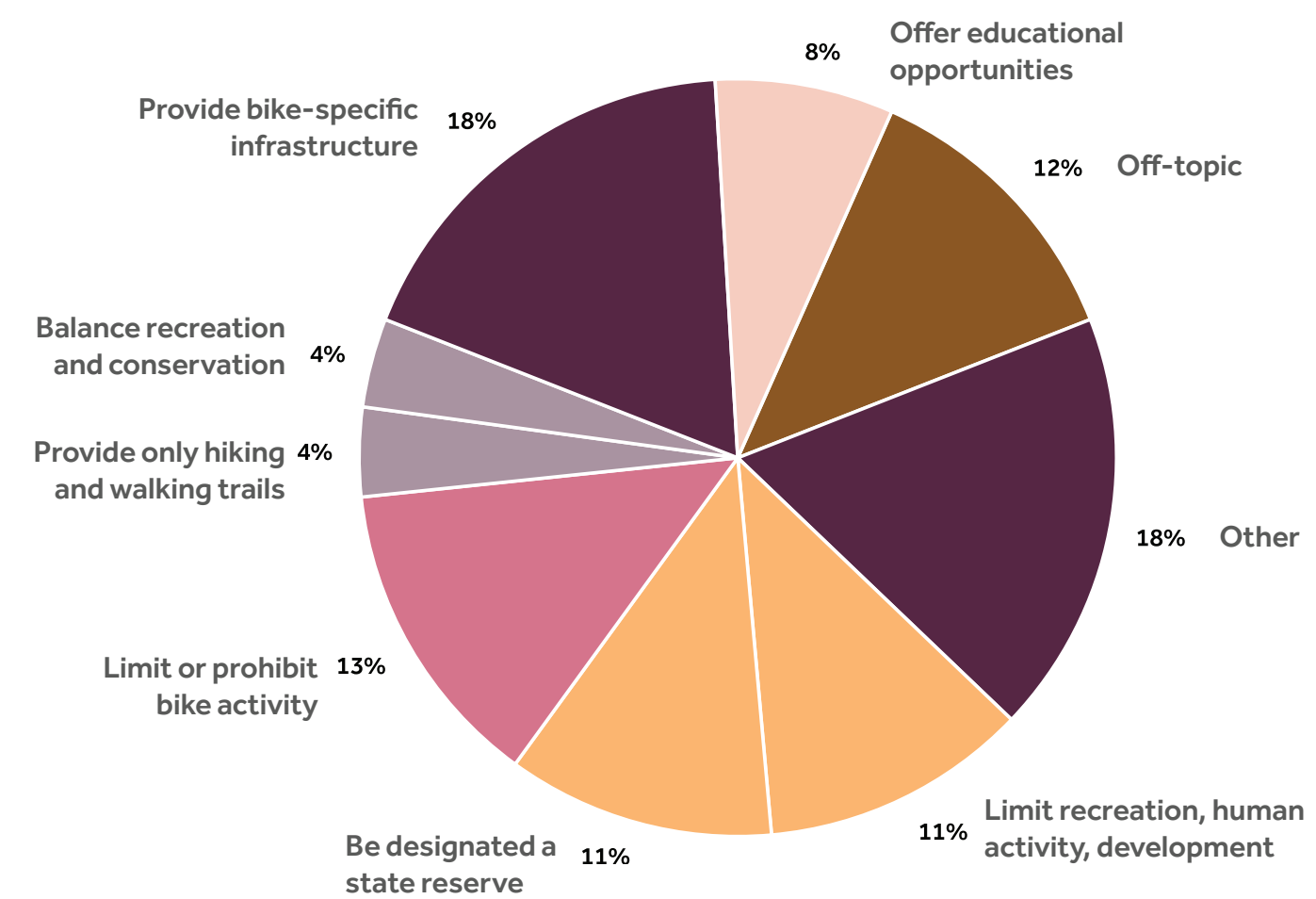


*Percentages indicate the percentage of people that included the given option in their selection of three.

7(a). How well does each statement align with your vision for the property's future?



7(b). What else does your vision for the future of the Alameda-Tesla property include?



Historic Timeline



c. 1850

Early Settlement

European settlers arrived in Corral Hollow Canyon and developed a supply post for gold-seekers as well as the Tuolumne Mines. Ranching efforts began at this time with the corralling of wild mustangs and establishment of a sheep ranch.

1855-1866

Early Coal Exploration and Mining

Multiple mining operations within Corral Hollow Valley ended in 1866 when lower-priced foreign coal flooded the market. In the subsequent 24 years, the mining site sat idle and sheep ranching was the main economic activity within the area.

1890-1911

The San Francisco and San Joaquin Coal Mining Company (Tesla Era)

Mining of coal deposits stretched across 6 miles of Corral Hollow Valley. Other active industries during this time included clay, coal, sand, and manganese mining, industrial brick and pottery operations, lime kilns, gravel quarries, and a railroad company. The townsites of Tesla, Jimtown, Frytown Treadwell Row, and Harrietville were developed and supported 3,500 inhabitants with a post office, company store, hotels, and saloons.

The Tesla Era ended after a series of floods, fires, an explosion, and financial catastrophe destroyed many buildings and led to the abandonment of the towns and industrial activities. During this time ranching transitioned from sheep to cattle.

1916-1950s

20th Century Mining

Several attempts to continue mining for sand, clay, or gravel had minimal success during this time. Cattle ranching remained the dominant economic activity in the area.

Early 20th Century

Water and Power Generation

The San Francisco Public Utilities Commission constructed a 28.5-mile-long tunnel through the Coast Range mountains to bring water from Hetch Hetchy to San Francisco. Waste rock from the tunneling work near the southern boundary of the Alameda-Tesla Property was dumped into Mitchel Ravine during this time and is still visible on site. The transmission line built during this time continues to deliver hydroelectric power to Pacific Gas & electric customers.

Late 1800s to Present

Ranching

Cattle ranching continued on the Alameda-Tesla property until it was acquired by State Parks in 1998. Ranching continues as an economic pursuit on privately owned lands surrounding the Alameda-Tesla property.



Tesla Road
Arroyo Seco

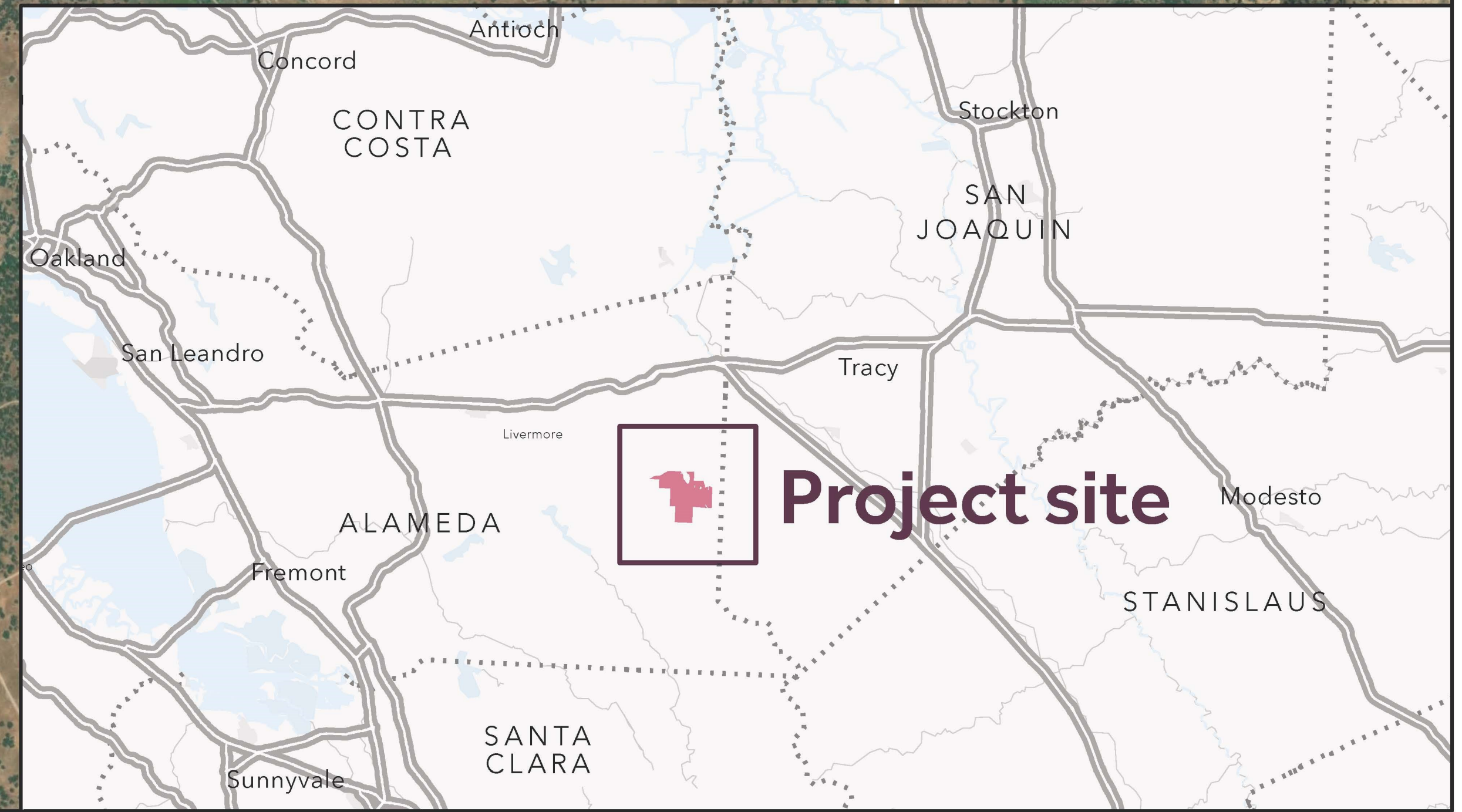


Alameda County
San Joaquin County

Diablo Range
District Office

Corral Hollow Creek

Carnegie State
Vehicular Recreation
Area

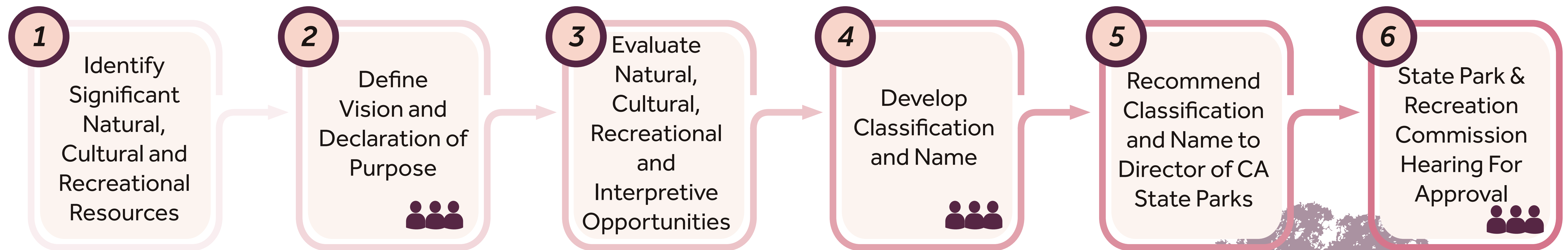


Project Process

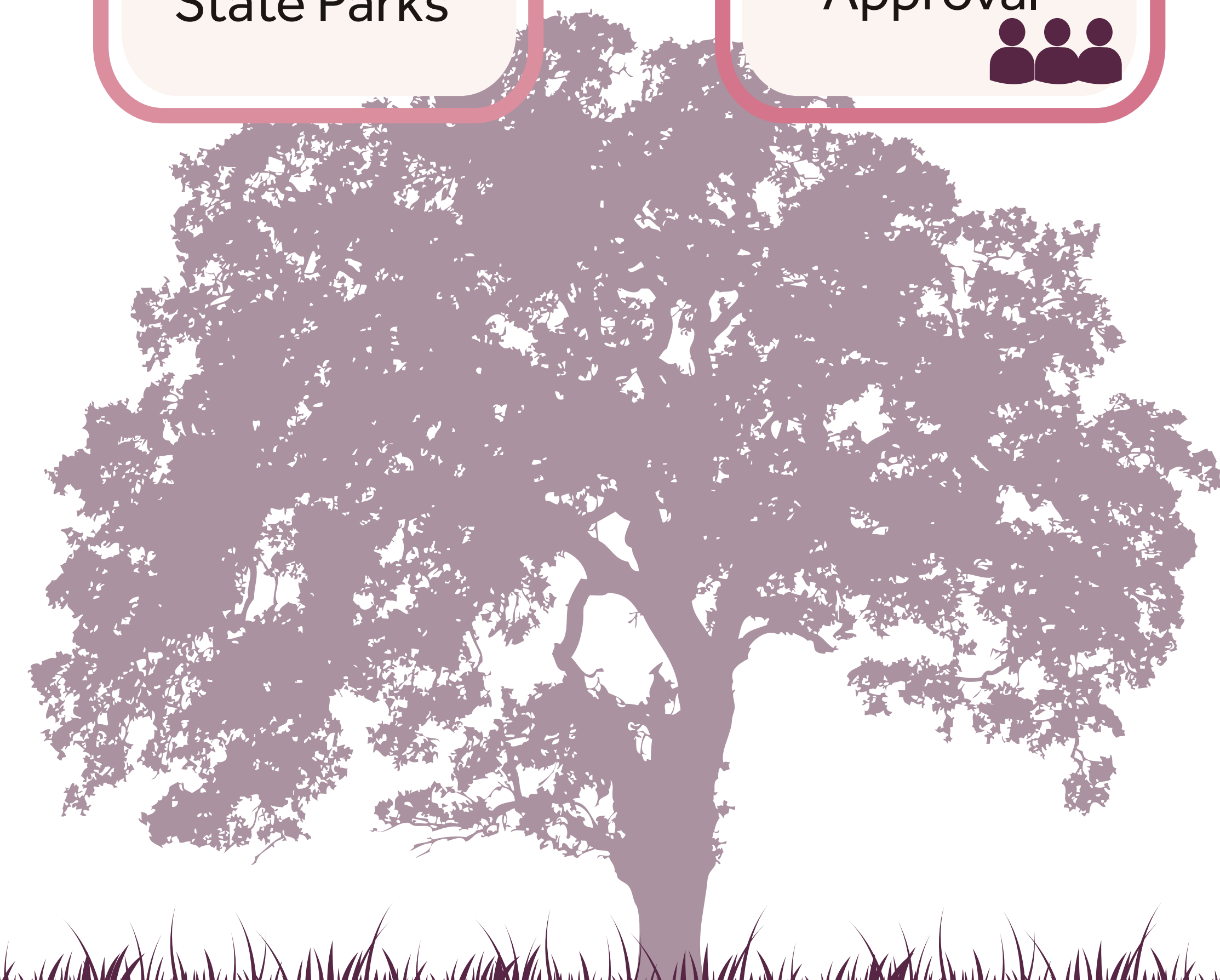
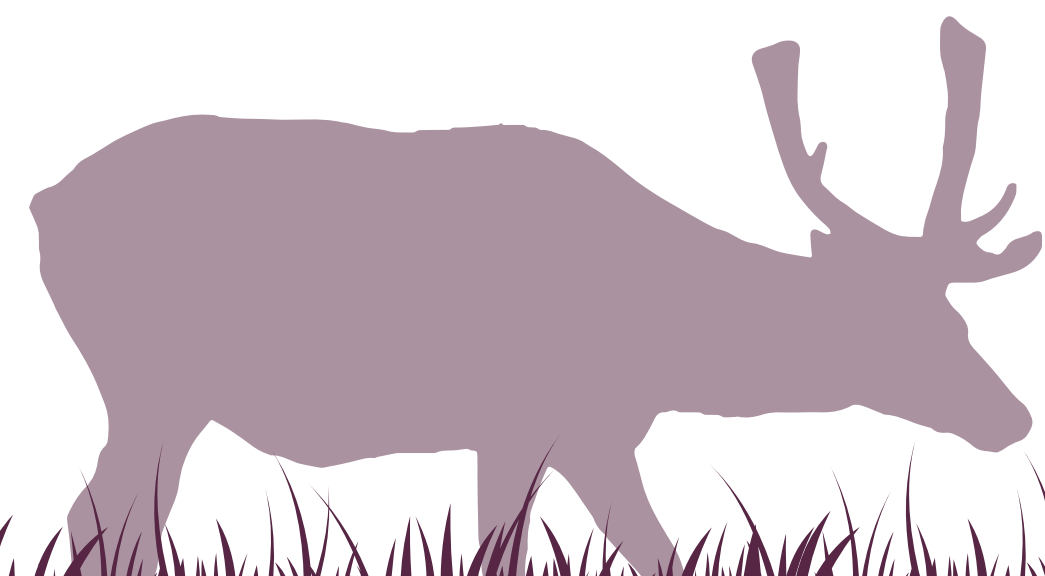


PHASE I: Establish Park Classification and Name

Timeframe: 2023-2024



 *Public Engagement Opportunities*

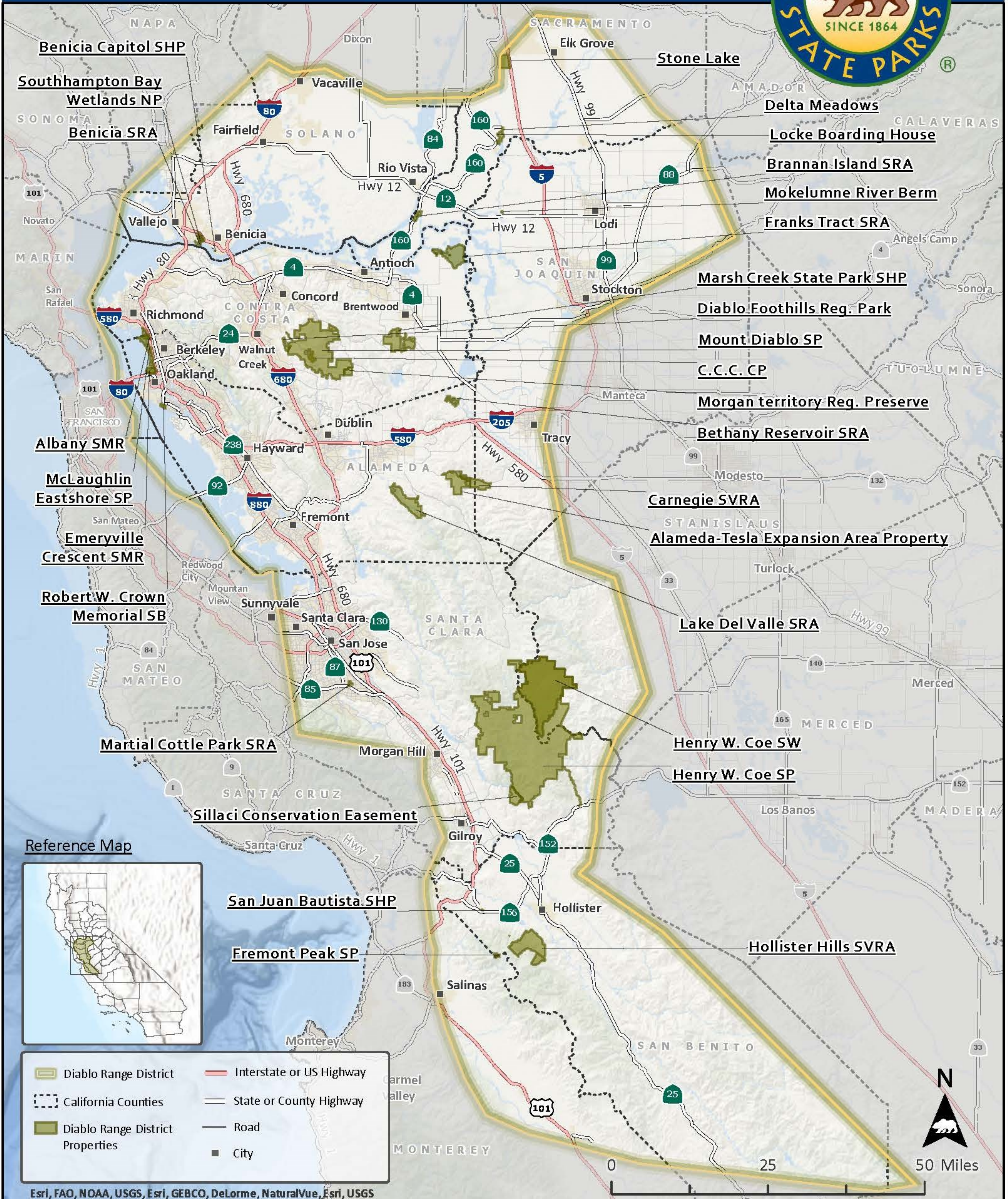


Website: AlamedaTeslaPlan.com
Email: Info@AlamedaTeslaPlan.com



Diablo Range District Map

State Park Units

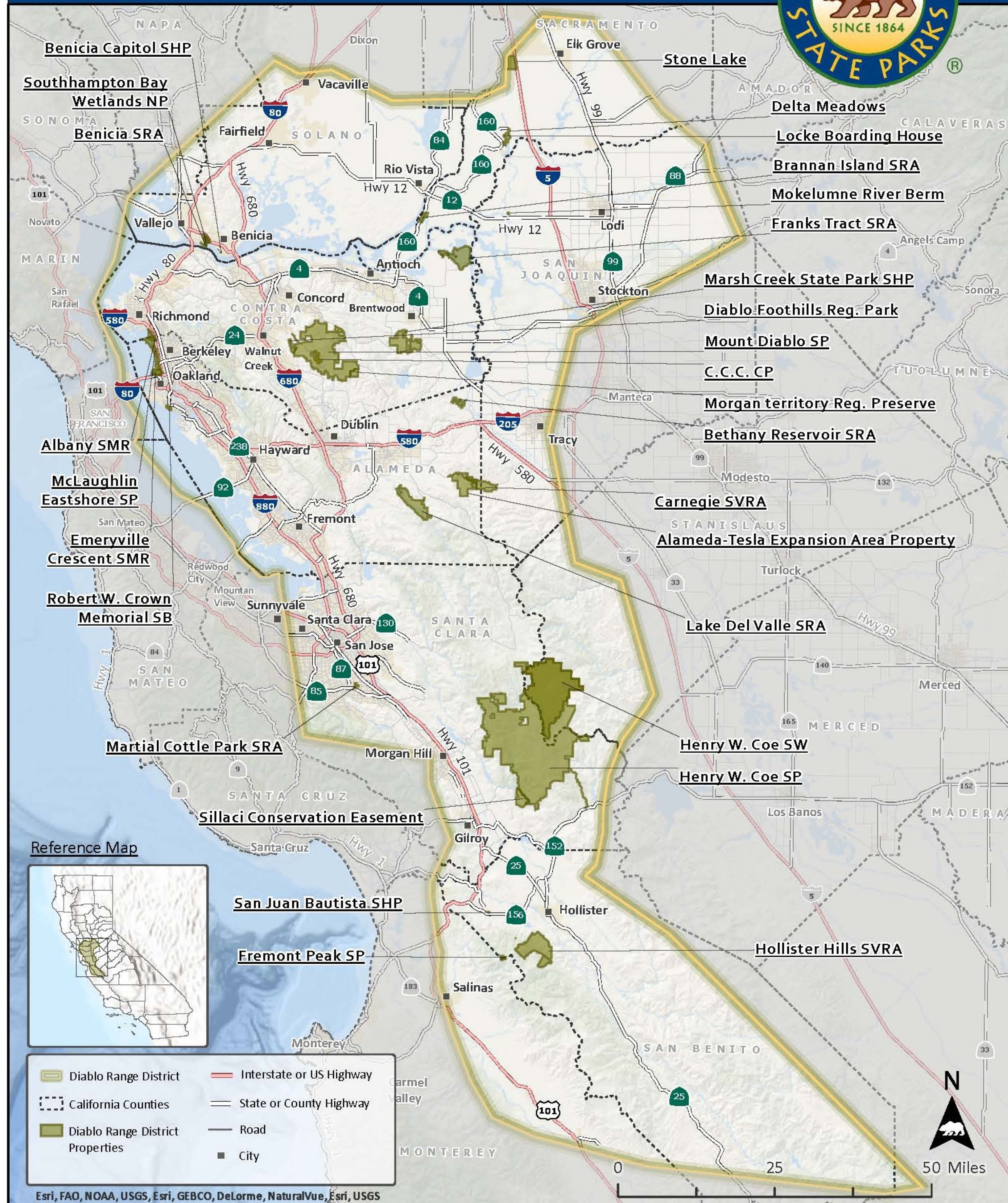


- | | |
|----------------------------------|--------------------------|
| Diablo Range District | Interstate or US Highway |
| California Counties | State or County Highway |
| Diablo Range District Properties | Road |
| | City |

Esri, FAO, NOAA, USGS, Esri, GEBCO, DeLorme, NaturalVue, Esri, USGS

Diablo Range District Map

State Park Units



Activities Offered in the Diablo Range District



CALIFORNIA STATE PARKS



Benicia Capitol SHP



Brannan Island SRA

ADVENTURE

ON THE

Mount Diablo SP



Henry W. Coe SP

RANGE



Carnegie SVRA



San Juan Bautista SHP



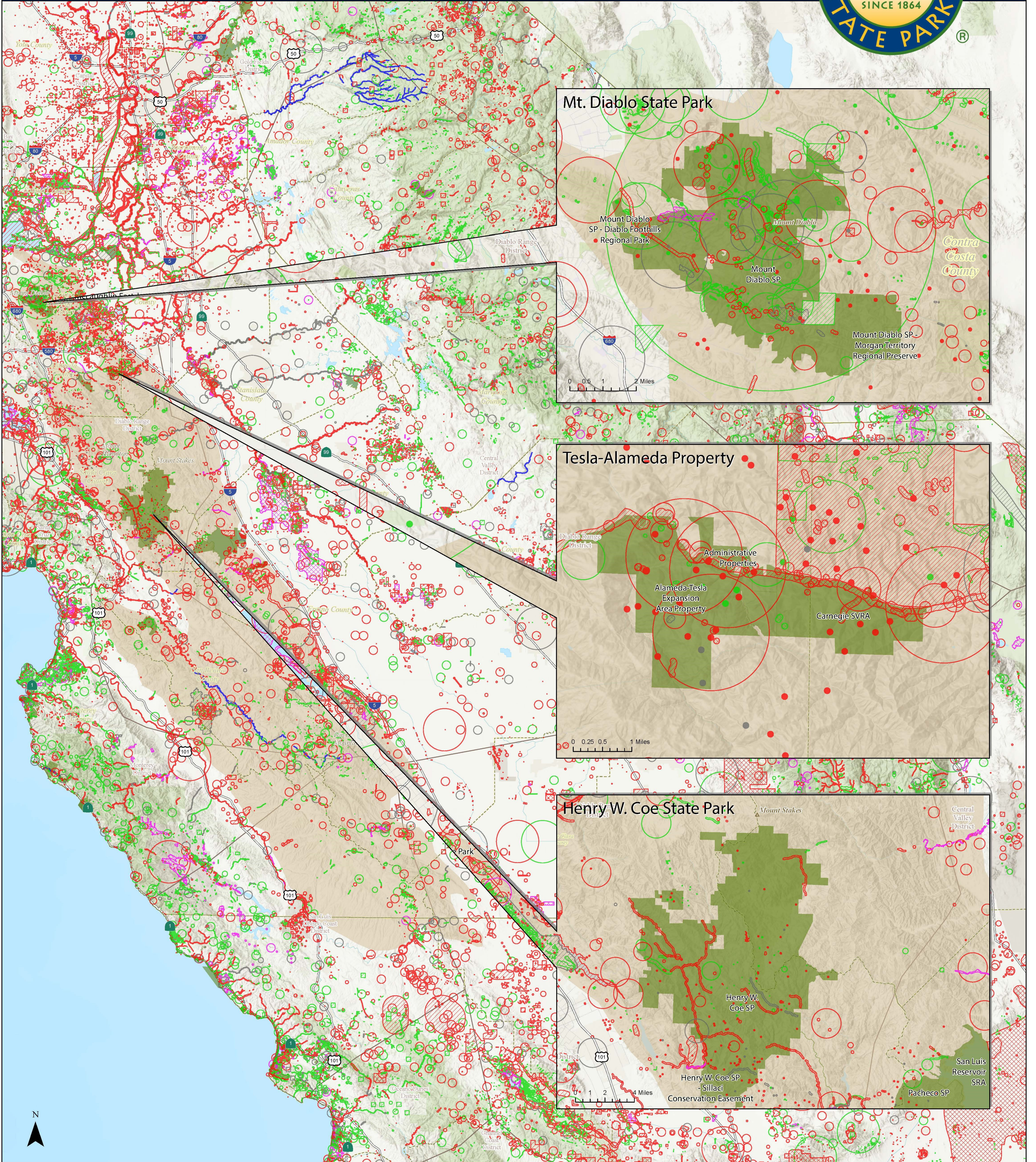
Hollister Hills SVRA

DIABLO RANGE DISTRICT



California Natural Diversity Database

Diablo Range



Legend		
CSP Unit Boundary	Animal (specific)	Aquatic Comm. (specific)
District Boundary	Animal (non-specific)	Aquatic Comm. (non-specific)
Diablo Range Boundary	Animal (circular)	Aquatic Comm. (circular)
County Boundary	Terrestrial Comm. (80m)	Multiple (80m)
CNDDB		
Plant (80m)	Terrestrial Comm. (specific)	Multiple (specific)
Plant (specific)	Terrestrial Comm. (non-specific)	Multiple (non-specific)
Plant (non-specific)	Terrestrial Comm. (circular)	Multiple (circular)
Plant (circular)	Aquatic Comm. (80m)	Sensitive EO's (Commercial only)
Animal (80m)		

4/10/2024 8:26 AM
 Spatial Reference
 Name: NAD 1983 California Teale Albers

CULTURAL RESOURCES

Archaeology



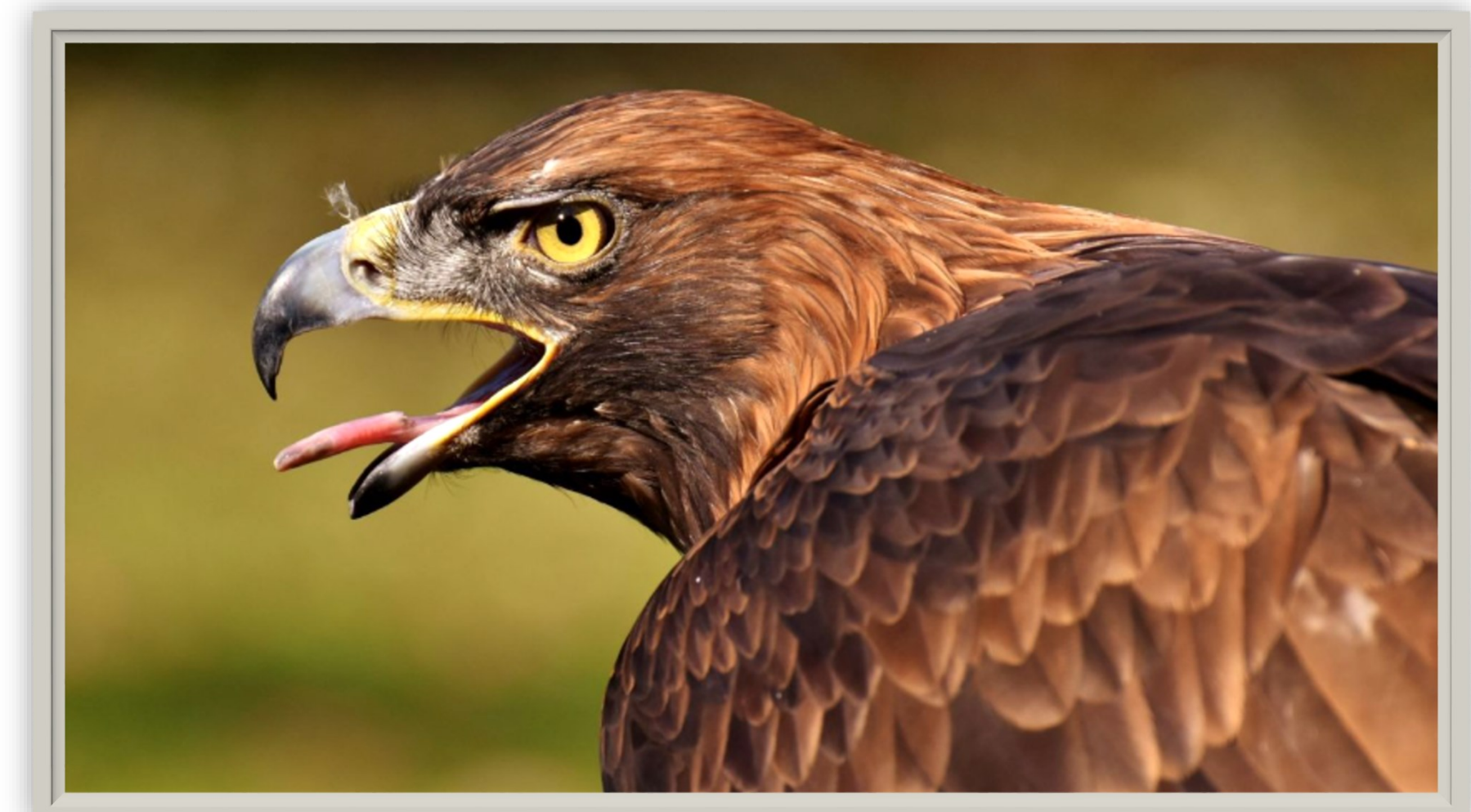
History



Museums



Tribal Cultural Resources





Interpretation





Interpretation



Fieldtrips

JUNIOR RANGERS WILDLIFE 11-1 PLAY A GAME

20 years of PORTS program

CALIFORNIA STATE PARKS JUNIOR RANGER

Carnegie SVRA SAFETY WEEK ACTIVITIES SAFETY RIDE MEET HERE @ 11

CARNegie

