



UNDERSTANDING SUB-CLASSIFICATION: ACTIVITIES

The State Parks classification system includes three sub-classifications: Natural Preserve, Cultural Preserve, and Wilderness Area. Sub-classification, if used, applies to a defined area within the larger park unit. As with primary classification, sub-classification contributes to the determination of the type and intensity of activities allowed in the sub-classified area. This graphic illustrates the range of potential activities under the two applicable sub-classification categories at Alameda-Tesla. The Wilderness Area sub-classification is only applicable in areas of 5,000 acres or greater and thus doesn't apply at Alameda-Tesla.

TYPES AND RANGE OF ACTIVITIES/DEVELOPMENT

TRAIL SYSTEM
Ex: Paved and unpaved trails

Low-Intensity: Fewer, narrower, or shorter trails, limited to hiking only. May have time restrictions. Smaller staging or parking areas.

High-Intensity: More, wider, and longer trails that allow biking and equestrian usage. Fewer time restrictions. More and larger staging and parking areas.

INTERPRETIVE ACTIVITIES
Ex: Guided tours, programs, exhibits, and visitor centers

Low-Intensity: Limited guided tours, fewer exhibits and programs. Smaller visitor center, if any, with limited development footprint.

High-Intensity: Multiple and frequent tours, more exhibit and programs. Larger facilities and more extensive development footprint.

RECREATION
Ex: Wildlife viewing, picnicking, swimming, boating, rock climbing, and other recreational activities

Low-Intensity: Fewer and smaller areas for activities and support amenities. May have restrictions on hours, duration, and seasons. Smaller staging and parking areas.

High-Intensity: More and larger areas for activities and support amenities. Fewer restrictions on hours, duration and seasons. More and larger staging and parking areas.

OVERNIGHT LODGING
Ex: Camping, RVs, trailers, and hotels

Low-Intensity: Fewer and smaller overnight options with minimal facilities. May have restrictions on hours, duration, and seasons.

High-Intensity: More and larger overnight options, with more facilities and amenities. Fewer restrictions on hours, duration and seasons.

Low

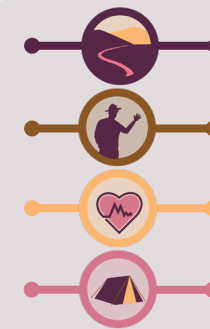
Typical Intensity of Activities

High

Icon = Typical Intensity of Activities/ Development

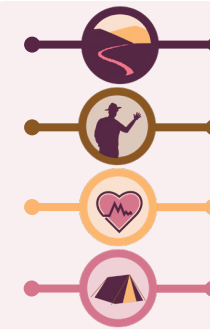
NATURAL PRESERVE

Purpose: Preserve biological, geological, or topographical features, processes, or patterns that are of significance.



CULTURAL PRESERVE

Purpose: Protects features such as sites, buildings, or zones which represent significant places or events in the flow of human experience in California



WILDERNESS

Purpose: Preserve the wilderness environment and its natural conditions.

Note: The Alameda-Tesla property is less than 5,000 acres, thus it cannot be sub-classified as a wilderness.

