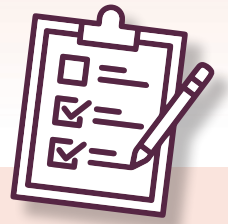


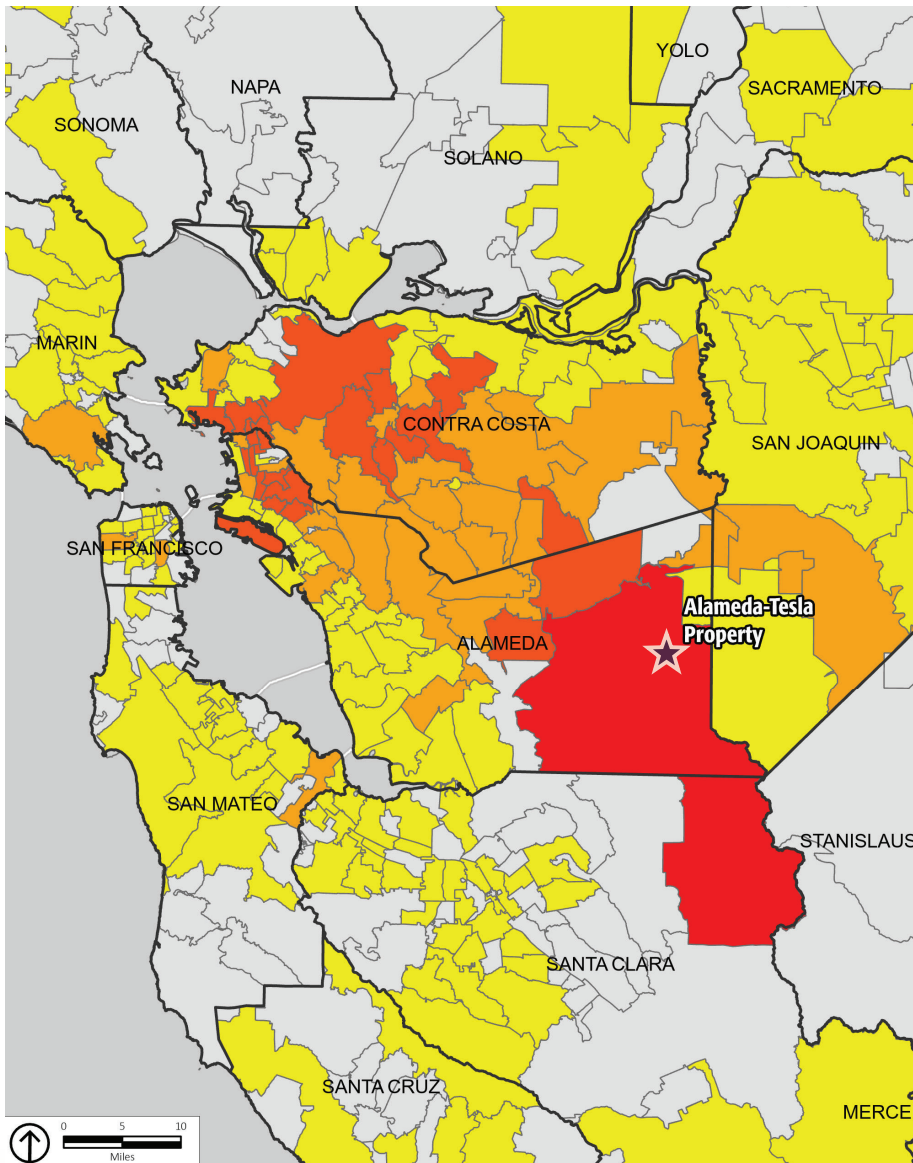


Alameda-Tesla Classification and General Plan Project Visioning Survey Results Summary



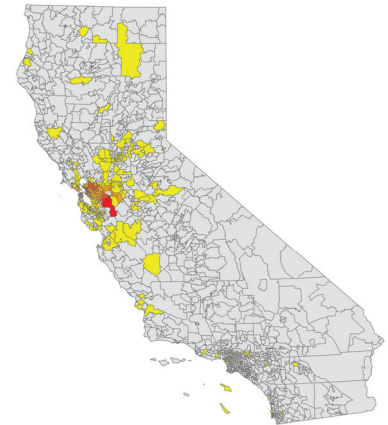
Here's what we heard from you!

The Visioning Survey was available from October through December 2023. It collected information about what people envision for the **types and intensity of future activities and experiences** at the California State Parks Alameda-Tesla property.



Zip code 94550 had the most responses!

Zip codes with the five highest response counts fell within a 35-mile radius of the Alameda Tesla property.



- Less than 5 responses
- 5 - 12 responses
- 13 - 27 responses
- 28 - 71 responses
- No responses

1,257 responses were collected!

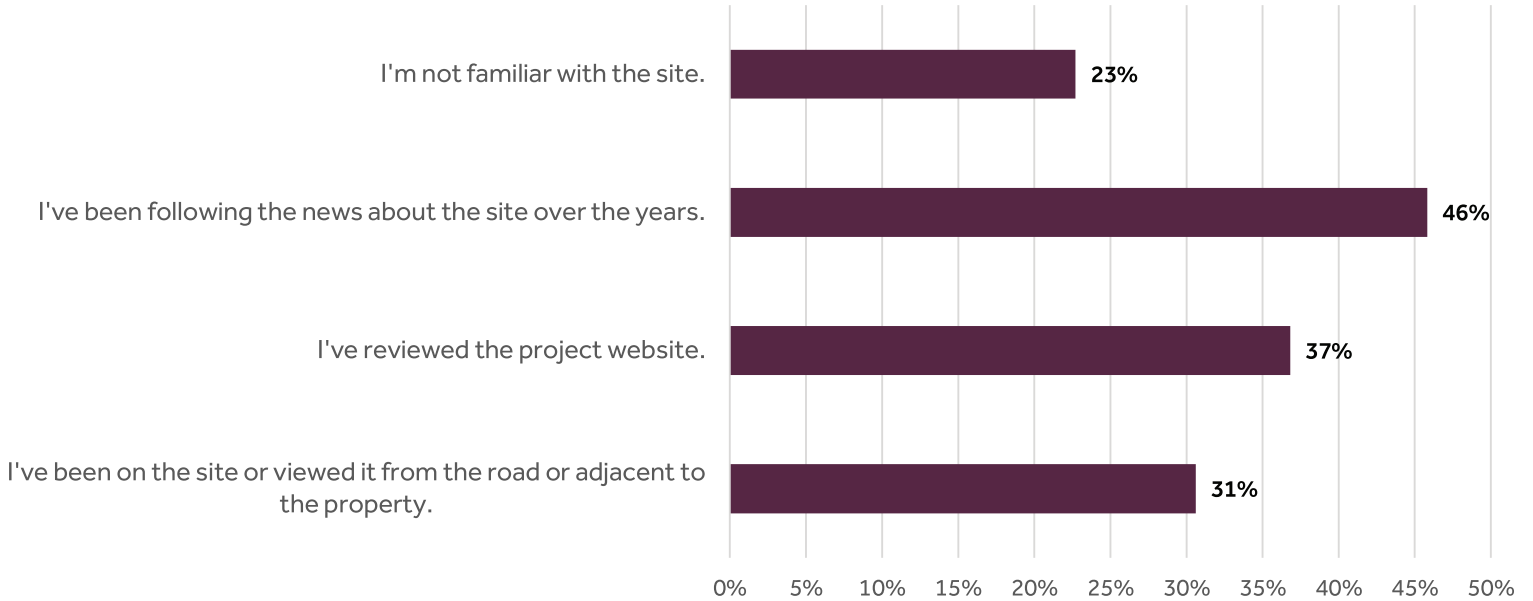
Survey respondents weighed in on topics like recreational activities, educational interests, and a vision for the property.



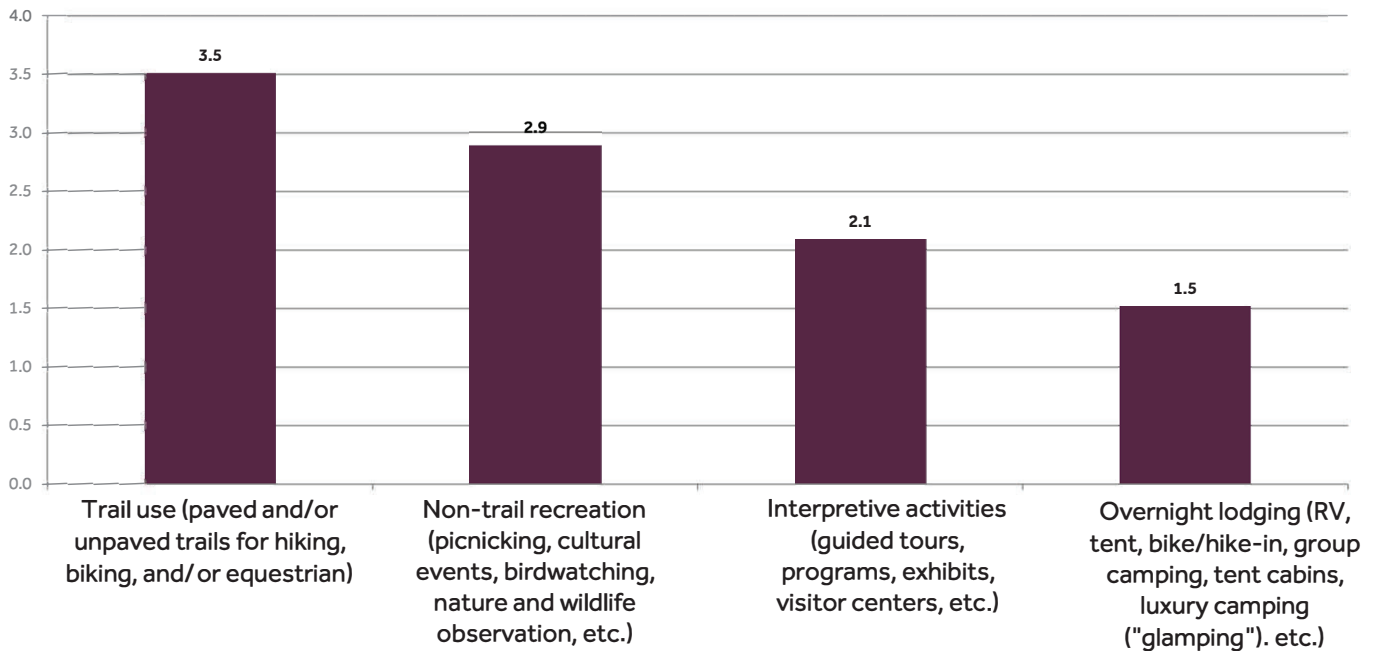


Alameda-Tesla Classification and General Plan Project Visioning Survey Results Summary

1. How familiar are you with the Alameda-Tesla property?



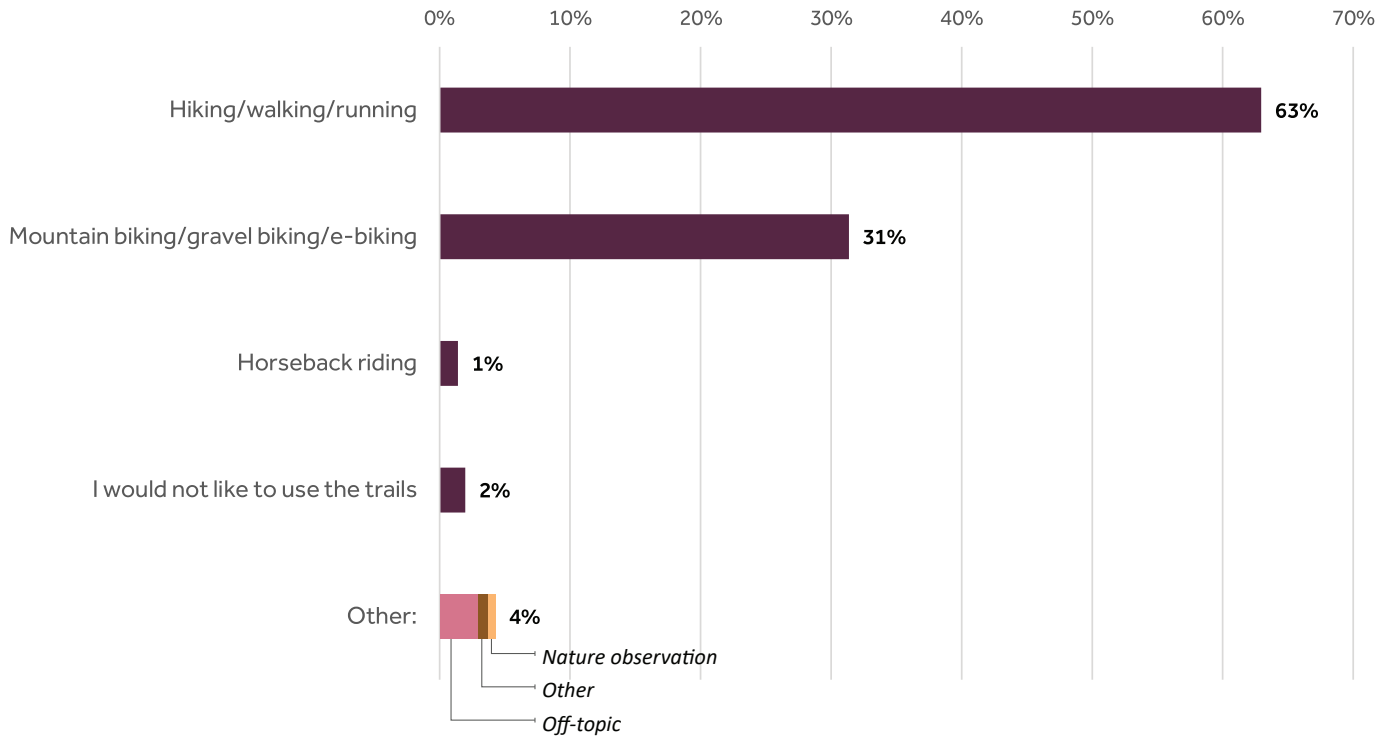
2. What types of activities would you like to participate in at the property?



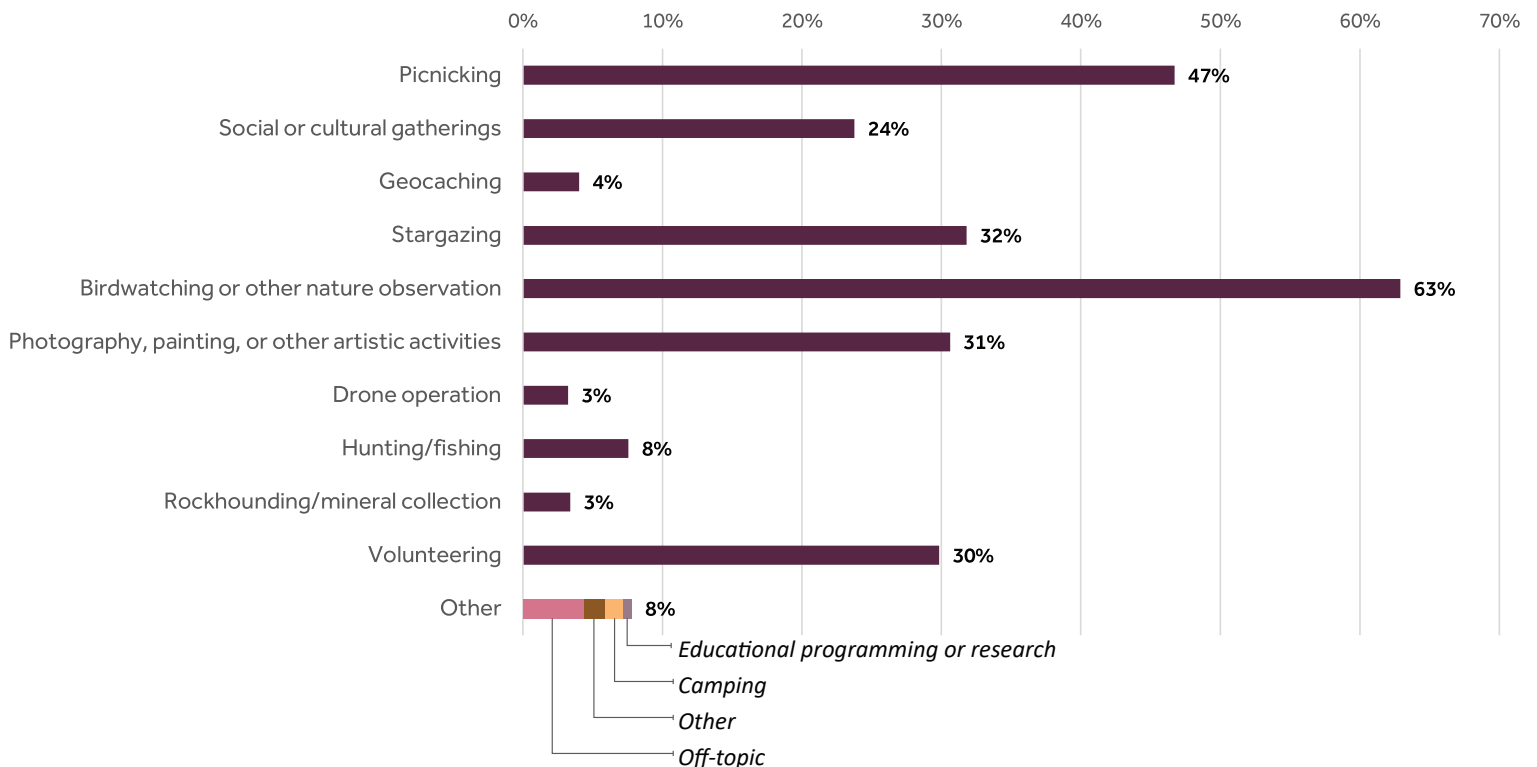


Alameda-Tesla Classification and General Plan Project Visioning Survey Results Summary

3. If there were trails at the property in the future, how would you prefer to use them?



4. What non-trail recreation activities would you like to participate in at the property?

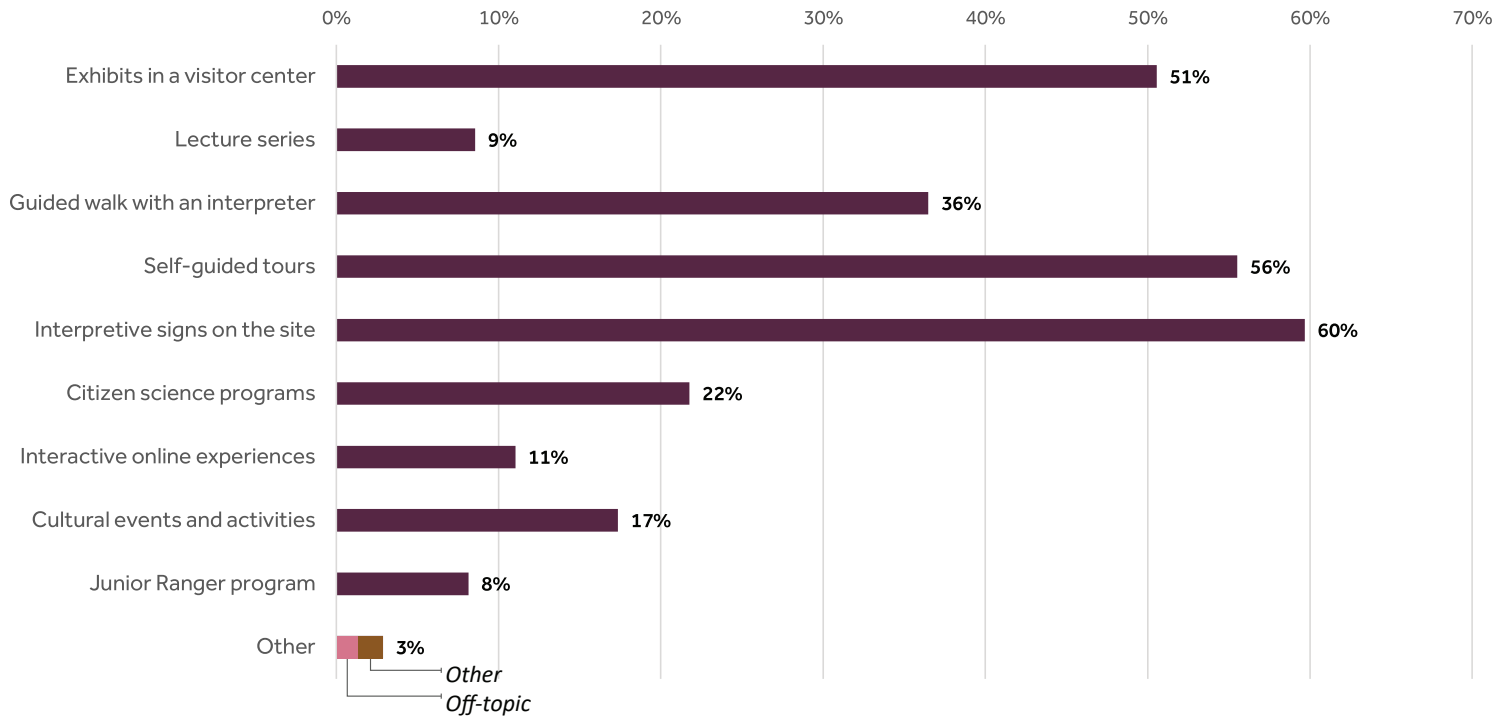


*Percentages indicate the percentage of people that included the given option in their selection of three.

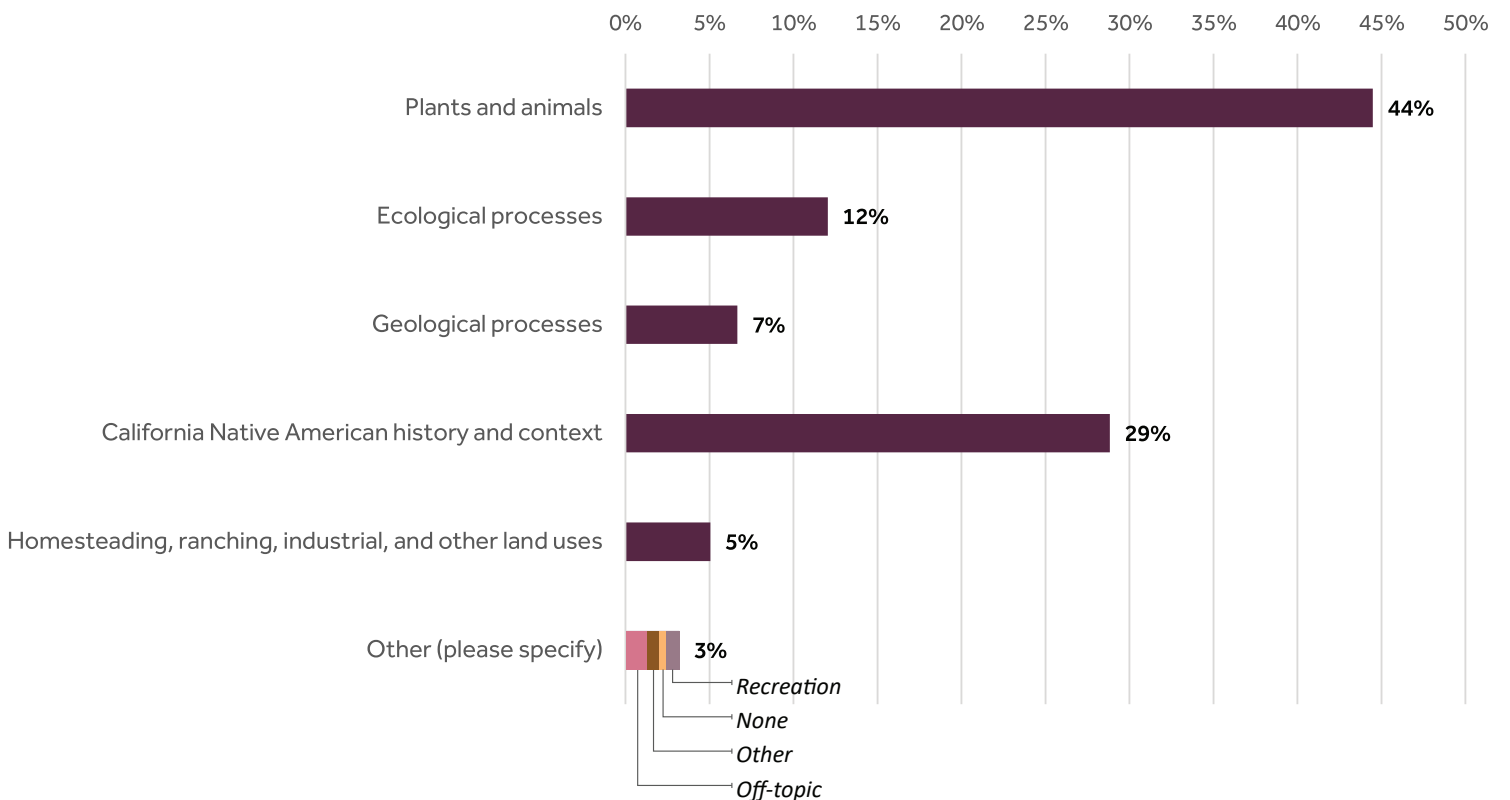


Alameda-Tesla Classification and General Plan Project Visioning Survey Results Summary

5. How would you like to learn about the natural and cultural history of the property?



6. What are you most interested in learning about at the Alameda-Tesla property?

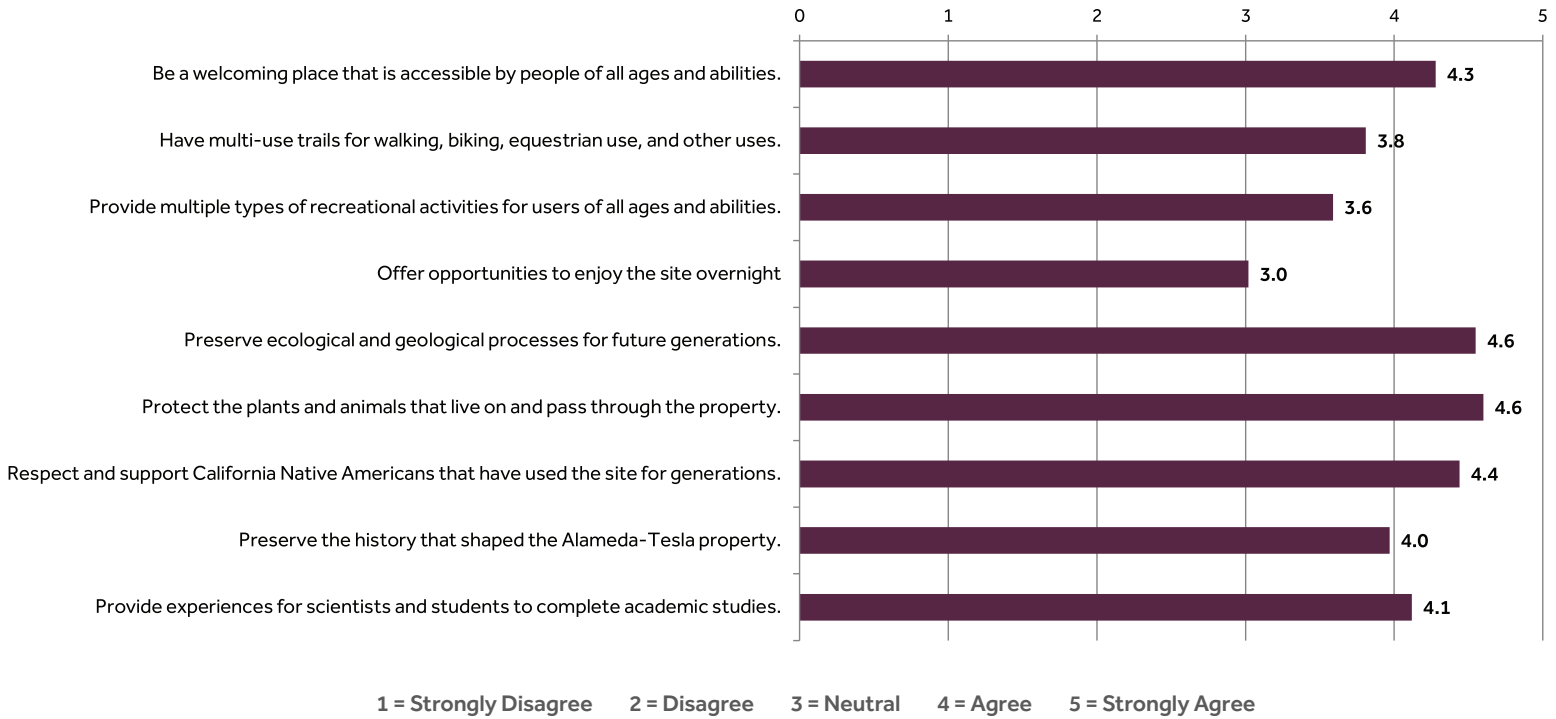


*Percentages indicate the percentage of people that included the given option in their selection of three.



Alameda-Tesla Classification and General Plan Project Visioning Survey Results Summary

7(a). How well does each statement align with your vision for the property's future?



7(b). What else does your vision for the future of the Alameda-Tesla property include?

